

Beef Directory
2022



RISKS AND DISCLAIMERS

DOVEA GENETICS LIMITED (“DOVEA”) AND SOUTH EASTERN CATTLE BREEDING SOCIETY LIMITED (“SECBS”) DRAW YOUR ATTENTION TO THE FOLLOWING:

1 ANY TYPOGRAPHICAL, CLERICAL, OR OTHER ERROR OR OMISSION, MISDESCRIPTION OR MISTAKE IN ANY SALES LITERATURE, QUOTATION, PRICE LIST, ORDER CONFIRMATION, INVOICE OR OTHER DOCUMENT OR INFORMATION ISSUED BY ANY OF DOVEA OR SECBS (INCLUDING WITHOUT LIMITATION THIS DIRECTORY) SHALL BE SUBJECT TO CORRECTION WITHOUT ANY LIABILITY ON THE PART OF ANY OF DOVEA OR SECBS. NO SUCH ERROR, MISDESCRIPTION OR MISTAKE SHALL GIVE RISE TO ANY RIGHT OF ACTION, CLAIM OR ENTITLEMENT TO COMPENSATION OF ANY NATURE WHATSOEVER OR ANY RIGHT OF TERMINATION OR RECISSION.

2 ALL SAMPLES, DRAWINGS, DESCRIPTIVE MATTER, SPECIFICATIONS, ADVERTISING OR ANY OTHER PROMOTIONAL MATERIAL AND ANY DESCRIPTIONS OR ILLUSTRATIONS CONTAINED IN ANY DIRECTORY, CATALOGUES OR BROCHURES (INCLUDING WITHOUT LIMITATION THIS DIRECTORY) ARE ISSUED OR PUBLISHED FOR THE SOLE PURPOSE OF GIVING AN APPROXIMATE IDEA OF THE GOODS AND/OR THE SERVICES DESCRIBED IN THEM AND DO NOT CONSTITUTE ANY MATTERS OF FACT OR REPRESENTATION OR WARRANTY AS TO ITS SUBJECT MATTER OR INDUCING ANY PERSON TO ENTER INTO ANY CONTRACT. THEY SHALL NOT FORM PART OF ANY CONTRACT AND THERE SHALL BE NO SALE BY SAMPLE.

3 SEMEN IS THE PRODUCT OF A NATURAL BIOLOGICAL PROCESS OVER WHICH NEITHER DOVEA NOR SECBS HAS ANY DIRECT CONTROL AND NEITHER DOVEA NOR SECBS WARRANT OR REPRESENT THAT ANY SEMEN THAT ANY OF THEM SUPPLIES:

- (i) WILL RESULT IN A VIABLE PREGNANCY;
- (ii) WILL PRODUCE A CALF THAT EXHIBITS ALL OR ANY OF THE CHARACTERISTICS DESCRIBED IN ANY PROOF;
- (iii) WILL BE FREE FROM DEFECTS, INCLUDING GENETIC DEFECTS; OR
- (iv) WILL YIELD A PARTICULAR NUMBER OF CALVES.

4 IN THE CASE OF SEXED SEMEN, NEITHER DOVEA NOR SECBS WARRANTS OR REPRESENTS THAT THE SORTING LEVELS REFERRED TO IN ITS MARKETING LITERATURE WILL RESULT IN A CORRESPONDING SEX RATIO IN CALVES PRODUCED FROM SEMEN.

ALL ORDERS FOR ANY OF THE GOODS AND/OR SERVICES REFERRED TO IN THIS DIRECTORY SHALL BE SUBJECT TO DOVEA AND SECBS' TERMS AND CONDITIONS FOR THE SUPPLY OF GOODS AND/OR SERVICES AS AMENDED FROM TIME TO TIME. THE CURRENT VERSION OF SUCH TERMS CAN BE READ AT WWW.DOVEAGENETICS.IE. YOUR ATTENTION IS DRAWN TO THE PROVISIONS OF THOSE TERMS HEADED:

- a) APPLICATION OF CONDITIONS AND FORMATION OF CONTRACT
- b) DESCRIPTION OF GOODS OR SERVICES
- c) SEMEN DISTRIBUTION SERVICES
- d) CUSTOMER'S OBLIGATIONS
- e) WARRANTIES
- f) LIMITATION OF LIABILITY



2021 High Flyers



'Ballinlig Dolly Ella (RO)(P)' Top Price at Shorthorn Premier Sale
Sired by Clonina Explorer 300 (RO)(P)
Sold for €4,000



'Laheens Triumph' Top Priced Male at The Irish Angus Elite Sale
Sired by Stouphill Bomber (AA5373)



'Clonagh Tiddles Frances' Top Priced Angus at Clonagh Festive Females Sale. Sold for €5,800
Sired by Keirsbeath Karma (AA4638)



'Ernevalley Rolex' Senior Champion at The Irish Limousin Premier Sale
Sired by Ernevalley Madison (LM4745)
Sold for €7,000



Top Price at Manorhamilton Fatstock Sale
Sired by Elderberry Galahad (EBY).
300Kg sold for €4,200



'Rathnashan Mozzarella P ET' Reserve Senior Champion at The Irish Simmental Premier Sale, Sold for €9,500
Sired by Curaheen Gunshot P (SI4147)



Overall Commercial Champion Balmoral 2021
Sired by Tardif D'Hontoir (TFH)
Later Sold at Jalex Select 4 Sale for €6,400



Champion Weanling at Ballyjamesduff Show & Sale
Sired by Wilodge Joskins (LM2188) sold for €2,520



Overall Champion Ballinasloe Weanling Show & Sale
Sired by Leonard Van Terbeck (BB4399), sold for €2,990

Follow Us On our Social Media Platforms for Updates, Progeny & Competitions
www.doveagenetics.ie



Introduction

Dovea Genetics is a leading bovine genetics company located in Thurles, County Tipperary, Ireland. The company has been in operation since 1952. Since then we have been working with farmers in the development of the genetic merit of the national herd.

The relationships that we have developed with our customers over our long standing history are very important to us. We can assure our customers of a premium product and service and we would like to thank you for your continued support during these times. We appreciate feedback from farmers and respond to the demands of the market.

We at Dovea Genetics take pride in sourcing the finest beef bulls possible to maintain our reputation of outstanding quality. Throughout this directory you will find various sires to suit your herd. Some of our exciting new additions are as follows: Ballym Rocco (CH8169), Negrita Du Lac (BB8019) and Drumcrow Tribesman (AA8172) along with excellent additions to our Limousin, Hereford and Simmental panels. These bulls have been brought in to further strengthen our beef programme and offer the farmer even more choice when breeding the next generation.

We are delighted to be at the forefront of cutting-edge technology for our customers by signing a contract with Sexing Technologies for an Irish based sexed semen laboratory during 2021. This will allow a wider range of our beef sires to be available as sexed semen. Our range of sexed beef sires can be seen in this directory.

Dovea Genetics is totally focused on producing semen to the highest quality and standards. We can provide valuable assistance in breeding decisions to help you, the farmer improve your herd annually. Our team of experienced advisors are on hand to provide you with the best available bovine genetics in Ireland.



www.doveagenetics.ie

*Maximizing Your
Herd's Genetic
Potential*



Index

Code	Name	Page	Code	Name	Page
Belgian Blue			Simmental		
BB5464	Minois De Berligant	2	SI4147	Curaheen Gunshot P	29
BB5214	Bistouri De Tohogne	2	SI7353	Clonagh Longshot Fab P	30
BB4438	An De Beauffaux	3	SI4336	Tulla Harry Potter	30
BB4494	Bricolage De Beauffaux	4	SI7350	Clonagh Lucky Hansome	31
BB4597	Affute De Thiboumont	4	Hereford		
BB8019	Negrita Du Lac	5	HE4105	Connmelvin Ollie	32
BB5367	Mats Van Terbeck	6	HE7548	Corlismore Cormac 076	32
BB6703	Tattoo VD Sysloberg	6	HE7545	Skehanore Fruitful	33
BB7659	Charleston Des Peupliers	7	Aubrac		
BB7842	Maradona Du Champ Du Moulin	8	AU6286	Johnstown Nelson 1039	34
BB5355	Engin D'Hontoir	9	Blonde D'Aquitaine		
BB4396	James Bond VD Jorchrishoeve	9	BA4661	Glacon	35
BB6700	Moderato De L'Empereur	10	BA6709	Happy	35
Maine Anjou			BA4131	Baltra Iceman	36
MA6712	Houston	10	BA2300	Gazou	36
Limousin			Saler		
LM2014	Ewdenvale Ivor	11	SA6253	Montesqieu	37
EBY	Elderberry Galahad	12	SA2189	Ulsan	37
LM5443	Brooklands Marco	13	Parthenaise		
LM7716	Brooklands Rowan	13	PT2165	Gainsbarre	38
CWI	Castleview Casino	14	Shorthorn		
LM7077	Carrowreagh Pablo	14	SH4609	Clonina Explorer	39
LM2395	Cavelands Jolly	15	JFZ	Bellantra Bressie	40
LM7719	Townleyhall Rupert	15	SH6424	Castlefin Hotshot	40
LM6529	Claddagh McCabe	16	Speckled Park		
LM4908	Haltcliffe Newton	16	SP4866	Ballylough Edward	41
LM4745	Ernevalley Madison ET	17	SP7347	Kilbarry Harper	41
LM7713	Birchpark Rufus	18	Angus		
LM2188	Wilodge Joskins	18	AA4303	Lisduff Red Pepper	42
LM5887	Ivantonov	19	AA4743	Kealkil Prime Lad	42
LM5878	Fest Noz	19	AA4638	Keirsbeath Karma	43
LM4093	Mullary Intrepid	20	AA8172	Drumcrow Tribesman	44
Charolais			AA5373	Stouphill Bomber	45
CH6292	Knockmahon Opel	20	AA4603	Dunard Navigator	45
CH4160	Pottlereagh Mark	21	AA4395	Kilteevan Nicky	46
CH4158	Glen Leon	22	BJG	Bunlahy John G	46
CH5827	Ocelot	22	AA4305	Lisduff Leonardo	46
CH8169	Ballym Rocco	23	Belted Galloway		
CH5932	Bud Orpheus	24	BY4875	Ballylough Ranger	47
CH2304	Clenagh Jasper	25	Highland		
CH5046	Laheens Master	26	HI7536	Onail	47
CH5872	Lebonvo	26	Area Representatives		
CH7830	Magique	27	Rear Cover		
S2163	Harestone Hercules	27	Specials		
S1381	Inverlochy Ferdie	28			
CH4202	Tombapik	28			

SYMBOLS



Easy Calving

Suitable for Heifers



Weanling Producer

Potentially Produce High Price Weanlings



Red Carrier

Red Factor



Replacement

High Suckler Potential



BEEF FINISHER

Potentially Produce High Carcass Value Cattle



Pedigree Royalty Sire

Semen Royalty for Pedigree Use

MINOIS DE BERLIGANT

BB5464

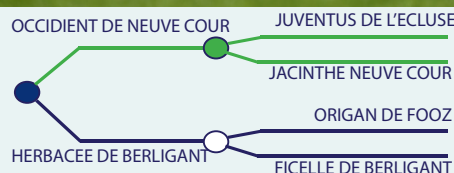
BBLBELM000861796600

MYOSTATIN: 2 X NT821

12-DEC-2017



- Extreme Muscled White Belgian Blue Sire
- First Calves are Exceptionally Well Shaped and Easily Born
- Carries the Red Gene



Eurostar Index ICBF Jan 2022				
Within Breed	Index	€uro Value	Reliability	Across Breeds
★★	Replacement	€33	38%	★
★	Terminal	€79	44%	★★★

Calving Difficulty		
When mated with:	Value	Reliability
Beef Heifers	34.3%	34%
Beef Cows	19.8%	67%

Expected Daughter Performance				
Within Breed	Key Profit Trait	Index Value	Reliability	Across Breeds
	Daughter CD	11.03%	50%	
★★★★★	Daughter Milk (Kg)	8.50	31%	★★★★★
★★★★★	Daughter CI (Days)	-1.19	34%	★★★

Expected Progeny Performance				
Within Breed	Key Profit Trait	Index Value	Reliability	Across Breeds
★★★★★	Docility	0.23	39%	★★★★★
★	Carcass Weight	29Kg	43%	★★★★★
★	Carcass Conformation	2.39	35%	★★★★★

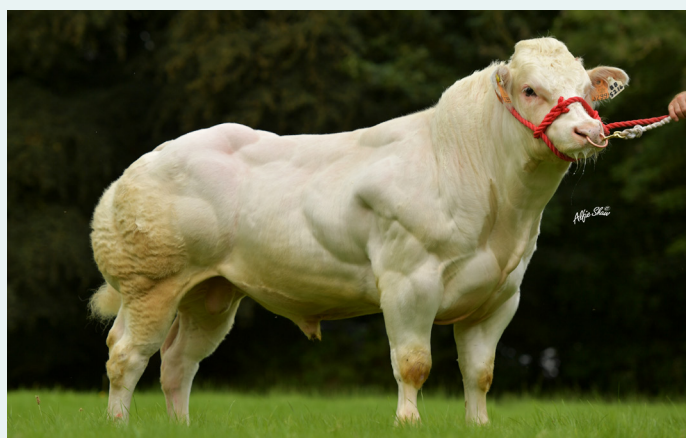
BISTOURI DE TOHOGNE

BB5214

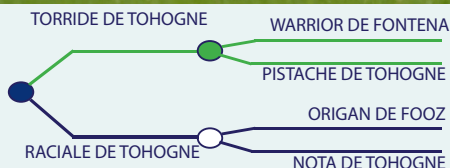
BBLBELM000463663299

MYOSTATIN: 2 X NT821

29-APR-2018



- Bistouri Calves are Standouts
- Medium Sized Progeny with Extreme Muscling and Style
- Breeding Excellent Colours



Eurostar Index ICBF Jan 2022				
Within Breed	Index	€uro Value	Reliability	Across Breeds
★★★★★	Replacement	€89	36%	★★★
★	Terminal	€128	41%	★★★★★

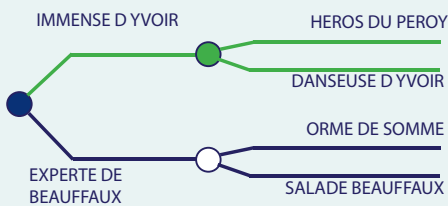
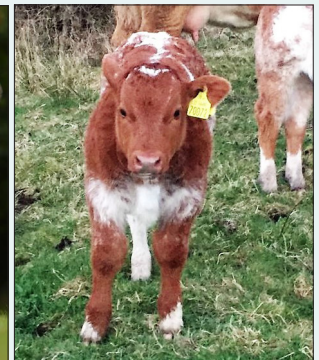
Calving Difficulty		
When mated with:	Value	Reliability
Beef Heifers	17.0%	37%
Beef Cows	9.0%	70%

Expected Daughter Performance				
Within Breed	Key Profit Trait	Index Value	Reliability	Across Breeds
	Daughter CD	10.57%	51%	
★★★★★	Daughter Milk (Kg)	5.00	30%	★★★★★
★★★★★	Daughter CI (Days)	2.43	31%	★

Expected Progeny Performance				
Within Breed	Key Profit Trait	Index Value	Reliability	Across Breeds
★★★★★	Docility	0.31	46%	★★★★★
★	Carcass Weight	28.9Kg	36%	★★★★★
★★	Carcass Conformation	2.70	32%	★★★★★



- Hugely Popular Belgian Blue Sire Throughout 2021
- Exceptionally Stylish Long Calves with Lots of Muscle
- Easy Calving Choice
- Carries the Red Gene - Breed the Roans
- **Sexed Female Semen Available**



Eurostar Index ICBF Jan 2022				
Within Breed	Index	€uro Value	Reliability	Across Breeds
★★★	Replacement	€59	52%	★★
★	Terminal	€110	66%	★★★★

Calving Difficulty		
When mated with:	Value	Reliability
Beef Heifers	17.5%	48%
Beef Cows	8.2%	93%

Expected Daughter Performance				
Within Breed	Key Profit Trait	Index Value	Reliability	Across Breeds
	Daughter CD	13.05%	54%	
★★	Daughter Milk (Kg)	3.10	39%	★★★
★★★★	Daughter CI (Days)	3.32	37%	★

Expected Progeny Performance				
Within Breed	Key Profit Trait	Index Value	Reliability	Across Breeds
★★★★★	Docity	0.32	84%	★★★★★
★	Carcass Weight	22.6Kg	66%	★★★★
★	Carcass Conformation	2.58	57%	★★★★★

BRICOLAGE DE BEAUFAUX

BB4494

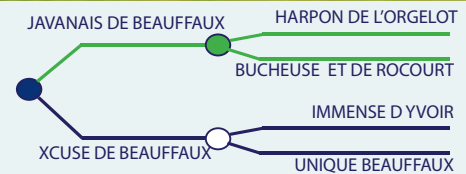
BBLBELM000056713627

MYOSTATIN: 2 X NT821

18-APR-2016



- Calves are Very Muscly with Style and Flashy Colours
- Easy Calving Choice with Extreme Shape
- Ideal Sire for Use on Second Calvers Onwards



Eurostar Index ICBF Jan 2022				
Within Breed	Index	€uro Value	Reliability	Across Breeds
★★★★★	Replacement	€112	44%	★★★★★
★★★★★	Terminal	€156	56%	★★★★★

Calving Difficulty		
When mated with:	Value	Reliability
Beef Heifers	15.7%	39%
Beef Cows	5.9%	74%

Expected Daughter Performance				
Within Breed	Key Profit Trait	Index Value	Reliability	Across Breeds
	Daughter CD	9.28%	51%	
★★★	Daughter Milk (Kg)	3.50	33%	★★★★★
★★★★★	Daughter CI (Days)	2.55	34%	★

Expected Progeny Performance				
Within Breed	Key Profit Trait	Index Value	Reliability	Across Breeds
★★	Docility	0.13	65%	★★★★★
★	Carcass Weight	29.2Kg	59%	★★★★★
★★★★★	Carcass Conformation	2.87	48%	★★★★★

AFFUTE DE THIBOUMONT

BB4597

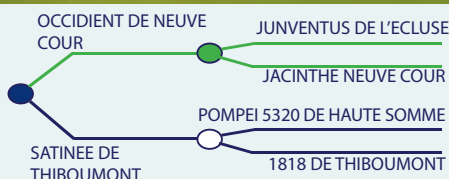
BBLBELM000658487162

MYOSTATIN: 2 X NT821

16-OCT-2016



- Easy Calving Short Gestation Belgian Blue Sire
- Extreme Muscle, Width & Correctness in the One Package
- Affute Is Perfect for Plainer Type Cows to Breed Exceptional Weanlings



Eurostar Index ICBF Jan 2022				
Within Breed	Index	€uro Value	Reliability	Across Breeds
★★	Replacement	€25	47%	★
★	Terminal	€111	68%	★★★★★

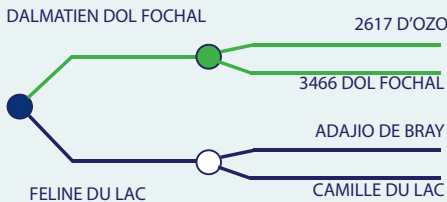
Calving Difficulty		
When mated with:	Value	Reliability
Beef Heifers	26.8%	41%
Beef Cows	14.9%	80%

Expected Daughter Performance				
Within Breed	Key Profit Trait	Index Value	Reliability	Across Breeds
	Daughter CD	13.63%	51%	
★★★★★	Daughter Milk (Kg)	7.30	31%	★★★★★
★★★★★	Daughter CI (Days)	4.28	36%	★

Expected Progeny Performance				
Within Breed	Key Profit Trait	Index Value	Reliability	Across Breeds
★★★★★	Docility	0.26	63%	★★★★★
★★	Carcass Weight	30.6Kg	75%	★★★★★
★★	Carcass Conformation	2.69	67%	★★★★★



- A Real Machine of a New Red & White 100% Belgian Blue Bull
- Negrita Is Full of Muscle with Serious Correctness, Width, Length & Style
- Pedigree Includes Nodule and Dartangan Du Castillon
- Use Negrita to Breed the Next Level Roan Progeny
- A Must Use for Your 2022 Breeding Season



Eurostar Index ICBF Jan 2022				
Within Breed	Index	€uro Value	Reliability	Across Breeds
★★★★★	Replacement	€81	33%	★★★★
★	Terminal	€94	35%	★★★★

Calving Difficulty		
When mated with:	Value	Reliability
Beef Heifers	21.2%	34%
Beef Cows	9.6%	59%

Expected Daughter Performance				
Within Breed	Key Profit Trait	Index Value	Reliability	Across Breeds
	Daughter CD	10.48%	50%	
★★★★★	Daughter Milk (Kg)	5.40	30%	★★★★
★★★★★	Daughter CI (Days)	1.57	30%	★

Expected Progeny Performance				
Within Breed	Key Profit Trait	Index Value	Reliability	Across Breeds
★★★★★	Dolcility	0.23	30%	★★★★★
★	Carcass Weight	23.5Kg	30%	★★★★
★	Carcass Conformation	2.07	30%	★★★★★

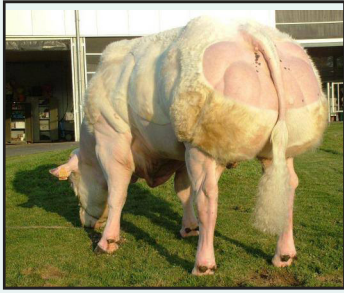
MATS VAN TERBECK

BB5367

BBLBELM000014580248

MYOSTATIN: 2 X NT821

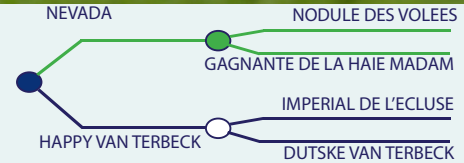
26-MAY-2017



Sire: Nevada



- Extreme Terminal Sire
- Progeny are Exceptional with Extreme Shape, Width and Structure
- Mats Is Perfect for Mature Suckler Cows to Produce E Grade Progeny



Eurostar Index ICBF Jan 2022				
Within Breed	Index	€uro Value	Reliability	Across Breeds
★★★	Replacement	€52	38%	★
★★★★	Terminal	€160	42%	★★★★★

Calving Difficulty		
When mated with:	Value	Reliability
Beef Heifers	22.6%	38%
Beef Cows	10.7%	69%

Expected Daughter Performance				
Within Breed	Key Profit Trait	Index Value	Reliability	Across Breeds
	Daughter CD	10.73%	53%	
★★★★★	Daughter Milk (Kg)	5.10	34%	★★★★
★	Daughter CI (Days)	8.13	33%	★

Expected Progeny Performance				
Within Breed	Key Profit Trait	Index Value	Reliability	Across Breeds
★★★★★	Docility	0.23	39%	★★★★★
★★★★★	Carcass Weight	38.6Kg	38%	★★★★★
★★★★★	Carcass Conformation	3.07	35%	★★★★★

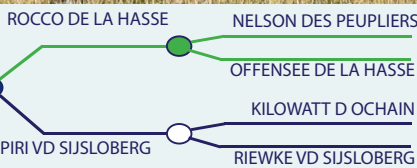
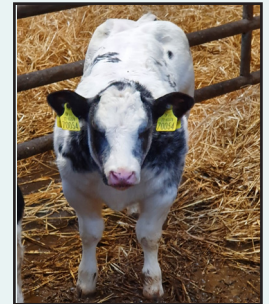
TATTOO VD SYSLOBERG

BB6703

BBLBELM000613427270

MYOSTATIN: 2 X NT821

16-FEB-2018



- Huge Satisfaction with Tattoo Progeny to Date
- Initial Reports would Suggest that Tattoo will be Easy Calving
- Use Tattoo to Produce Show Type Weanlings without Compromising on Calving Ease



Eurostar Index ICBF Jan 2022				
Within Breed	Index	€uro Value	Reliability	Across Breeds
★★★★	Replacement	€66	36%	★★
★★	Terminal	€136	39%	★★★★★

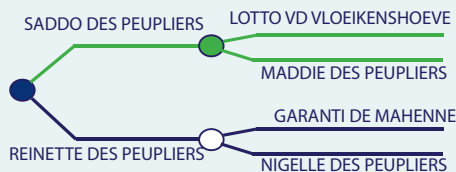
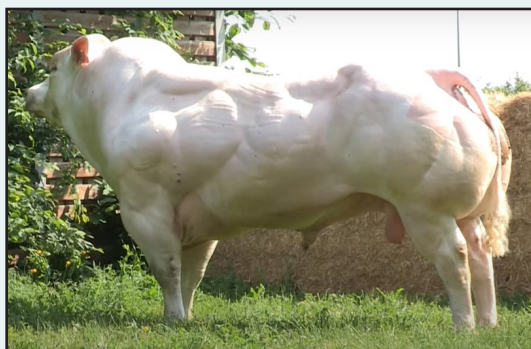
Calving Difficulty		
When mated with:	Value	Reliability
Beef Heifers	16.9%	36%
Beef Cows	7.9%	62%

Expected Daughter Performance				
Within Breed	Key Profit Trait	Index Value	Reliability	Across Breeds
	Daughter CD	9.93%	51%	
★★★★★	Daughter Milk (Kg)	6.10	33%	★★★★★
★★	Daughter CI (Days)	5.51	32%	★

Expected Progeny Performance				
Within Breed	Key Profit Trait	Index Value	Reliability	Across Breeds
★★★	Docility	0.15	35%	★★★★★
★	Carcass Weight	28.1Kg	35%	★★★★★
★★	Carcass Conformation	2.73	34%	★★★★★



- Exciting New Belgian Blue Sire
- Extreme Muscle, Length, Style & Outstanding Correctness
- SADDO X GARANTI X JOCANAS
- Outcross Pedigree for Irish Breeders



Eurostar Index ICBF Jan 2022				
Within Breed	Index	€uro Value	Reliability	Across Breeds
★★★	Replacement	€62	34%	★★
★	Terminal	€112	37%	★★★★

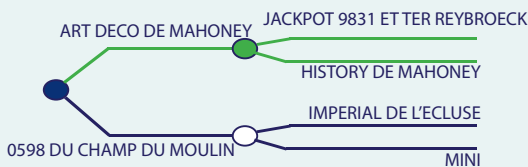
Calving Difficulty			
When mated with:	Value	Reliability	
Beef Heifers	21.4%	33%	
Beef Cows	11.2%	60%	

Expected Daughter Performance				
Within Breed	Key Profit Trait	Index Value	Reliability	Across Breeds
	Daughter CD	11.1%	50%	
★★★★	Daughter Milk (Kg)	4.70	32%	★★★★
★★★★	Daughter CI (Days)	2.95	31%	★

Expected Progeny Performance				
Within Breed	Key Profit Trait	Index Value	Reliability	Across Breeds
★★★★★	Docility	0.23	33%	★★★★★
★	Carcass Weight	29.7Kg	33%	★★★★★
★	Carcass Conformation	2.28	32%	★★★★★



- Exciting New Well Defined Muscular Black & White Blue for Irish AI
- Maradona Combines all the Greats of the Blue Breed including Jackpot, Imperial & Adajio
- Perfect Choice to Breed Extreme Muscled, High Value Weanlings



Eurostar Index ICBF Jan 2022

Within Breed	Index	€uro Value	Reliability	Across Breeds
★★	Replacement	€24	11%	★
★	Terminal	€120	12%	★★★★

Calving Difficulty

When mated with:	Value	Reliability
Beef Heifers	23.6%	10%
Beef Cows	13.2%	13%

Expected Daughter Performance

Within Breed	Key Profit Trait	Index Value	Reliability	Across Breeds
	Daughter CD	8.66%	8%	
★★★★	Daughter Milk (Kg)	4.86	12%	★★★★
★★	Daughter CI (Days)	6.20	9%	★

Expected Progeny Performance

Within Breed	Key Profit Trait	Index Value	Reliability	Across Breeds
★★★	Docility	0.17	14%	★★★★★
★★	Carcass Weight	30.8Kg	14%	★★★★★
★★	Carcass Conformation	2.69	13%	★★★★★

ENGIN D HONTOIR

BB5355

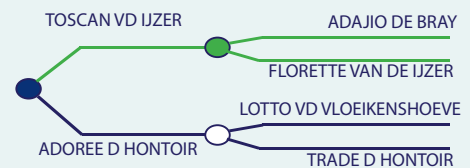
BBLBELM000858699848

MYOSTATIN: 2 X NT821

23-NOV-2016



- Engin is Breeding Very Muscular Black & White Calves
- Breeding Super Show Type Weanlings
- Use on Plainer Type Cows



Eurostar Index ICBF Jan 2022				
Within Breed	Index	€uro Value	Reliability	Across Breeds
★★★★★	Replacement	€87	36%	★★★
★	Terminal	€107	38%	★★★★★

Calving Difficulty		
When mated with:	Value	Reliability
Beef Heifers	24.5%	36%
Beef Cows	11.0%	61%

Expected Daughter Performance				
Within Breed	Key Profit Trait	Index Value	Reliability	Across Breeds
	Daughter CD	9.54%	53%	
★★★★★	Daughter Milk (Kg)	5.80	33%	★★★★★
★★★★★	Daughter CI (Days)	1.57	33%	★

Expected Progeny Performance				
Within Breed	Key Profit Trait	Index Value	Reliability	Across Breeds
★★★★★	Docility	0.21	33%	★★★★★
★	Carcass Weight	27.7Kg	35%	★★★★★
★	Carcass Conformation	2.39	34%	★★★★★

JAMES BOND VD JORCHRISHOEVE BB4396

BBLBELM000217251155

MYOSTATIN: 2 X NT821

23-AUG-2014



- James Bond Progeny are Truly Exceptional in Both Pedigree and Commercial Herds
- Progeny are Very Long Wide Cattle with Style and Beautiful Muscling
- Will Breed High Value Breeding Heifers with Colour



Eurostar Index ICBF Jan 2022				
Within Breed	Index	€uro Value	Reliability	Across Breeds
★★★★★	Replacement	€65	44%	★★
★★	Terminal	€133	59%	★★★★★

Calving Difficulty		
When mated with:	Value	Reliability
Beef Heifers	22.5%	40%
Beef Cows	10.1%	74%

Expected Daughter Performance				
Within Breed	Key Profit Trait	Index Value	Reliability	Across Breeds
	Daughter CD	6.36%	50%	
★★★	Daughter Milk (Kg)	3.90	32%	★★★★★
★★★	Daughter CI (Days)	4.30	35%	★

Expected Progeny Performance				
Within Breed	Key Profit Trait	Index Value	Reliability	Across Breeds
★★	Docility	0.12	49%	★★★★★
★★	Carcass Weight	31.3Kg	64%	★★★★★
★★	Carcass Conformation	2.68	56%	★★★★★

MODERATO DE L EMPEREUR

BB6700

BBLBELM000463658328

12-SEP-2018

MYOSTATIN: 2 X NT821



- Exceptionally Correct White Bull with Power, Length & Defined Muscle
- Incredibly Mobile Example of the Belgian Blue Breed
- Considered In Belgium to be 'Almost Perfection'



Eurostar Index ICBF Jan 2022				
Within Breed	Index	€uro Value	Reliability	Across Breeds
★★★★★	Replacement	€84	35%	★★★★
★★★★★	Terminal	€157	38%	★★★★★

Calving Difficulty		
When mated with:	Value	Reliability
Beef Heifers	20.7%	37%
Beef Cows	9.0%	62%

Expected Daughter Performance				
Within Breed	Key Profit Trait	Index Value	Reliability	Across Breeds
	Daughter CD	10.66%	53%	
★★★★★	Daughter Milk (Kg)	5.30	33%	★★★★★
★★★	Daughter CI (Days)	4.79	32%	★

Expected Progeny Performance				
Within Breed	Key Profit Trait	Index Value	Reliability	Across Breeds
★★★★★	Docility	0.19	33%	★★★★★
★★★★★	Carcass Weight	37.8Kg	34%	★★★★★
★★★	Carcass Conformation	2.81	33%	★★★★★

HOUSTON

MA6712

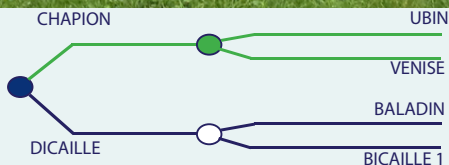
BBLFRAM004909349891

03-JUL-2012

MYOSTATIN: 2 X NT821



- Powerful Maine Anjou Sire
- Houston is Breeding Super Progeny in Belgium
- Will Leave Big Square Powerful Females with Colour



Eurostar Index ICBF Jan 2022				
Within Breed	Index	€uro Value	Reliability	Across Breeds
★★	Replacement	€52	34%	★
★★★★★	Terminal	€50	37%	★

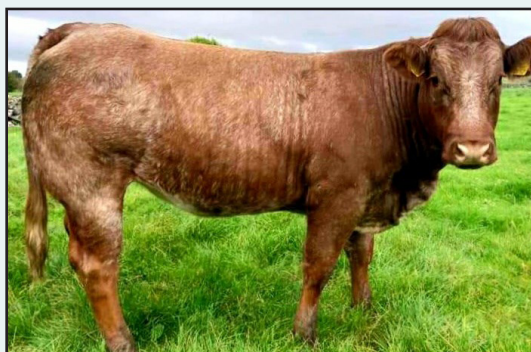
Calving Difficulty		
When mated with:	Value	Reliability
Beef Heifers	12.4%	30%
Beef Cows	5.9%	56%

Expected Daughter Performance				
Within Breed	Key Profit Trait	Index Value	Reliability	Across Breeds
	Daughter CD	6.94%	48%	
★	Daughter Milk (Kg)	1.90	35%	★★★
★	Daughter CI (Days)	-0.92	30%	★★★

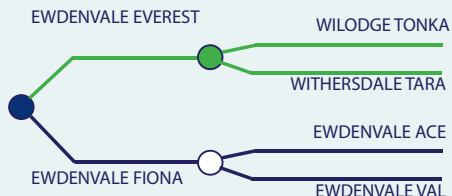
Expected Progeny Performance				
Within Breed	Key Profit Trait	Index Value	Reliability	Across Breeds
★★★★★	Docility	0.10	30%	★★★★★
★★★★★	Carcass Weight	15.9Kg	35%	★★★
★★★★★	Carcass Conformation	1.13	35%	★★



- Ireland's Ultimate Limousin Sire
- Replacement Index €181
- Terminal Index €158
- Extremely Easy Calving Limousin Sire:
 - o 2.6% C.D. on Beef Cows
 - o 6.2% C.D. on Beef Heifers
- Daughters are Performing Very Well in Irish Suckler Herds
- Progeny Exhibit Length, Muscle and Style



Available Sexed Male & Sexed Female



Eurostar Index ICBF Jan 2022				
Within Breed	Index	€uro Value	Reliability	Across Breeds
★★★★★	Replacement	€181	92%	★★★★★
★★★★★	Terminal	€158	96%	★★★★★

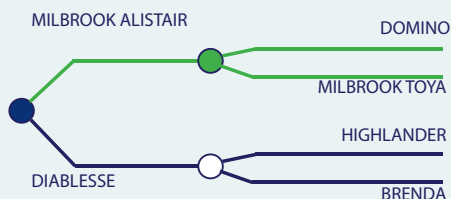
Calving Difficulty		
When mated with:	Value	Reliability
Beef Heifers	6.2%	99%
Beef Cows	2.6%	99%

Expected Daughter Performance				
Within Breed	Key Profit Trait	Index Value	Reliability	Across Breeds
	Daughter CD	6.11%	91%	
★★★	Daughter Milk (Kg)	-0.50	97%	★★
★★★★★	Daughter CI (Days)	-3.45	77%	★★★★★

Expected Progeny Performance				
Within Breed	Key Profit Trait	Index Value	Reliability	Across Breeds
★★	Docility	-0.08	99%	★
★★★★★	Carcass Weight	29.8Kg	99%	★★★★★
★★★★★	Carcass Conformation	2.49	99%	★★★★★



- EBY is Mister Consistent for The Last Decade
- Noted Breeder of Exceptional Roan Progeny
- EBY is the Most Renowned Sire for Use on Muscular Heifers
- Sexed Female Semen Available**



Eurostar Index ICBF Jan 2022

Within Breed	Index	€uro Value	Reliability	Across Breeds
★★★★	Replacement	€112	97%	★★★★
★★	Terminal	€118	95%	★★★★

Calving Difficulty

When mated with:	Value	Reliability
Beef Heifers	7.0%	99%
Beef Cows	3.1%	99%

Expected Daughter Performance

Within Breed	Key Profit Trait	Index Value	Reliability	Across Breeds
	Daughter CD	5.70%	99%	
★★	Daughter Milk (Kg)	-1.10	99%	★
★★★★	Daughter CI (Days)	-0.22	97%	★★

Expected Progeny Performance

Within Breed	Key Profit Trait	Index Value	Reliability	Across Breeds
★★★	Docility	-0.06	99%	★
★	Carcass Weight	19Kg	99%	★★★
★★★	Carcass Conformation	2.15	99%	★★★★★

BROOKLANDS MARCO

LM5443

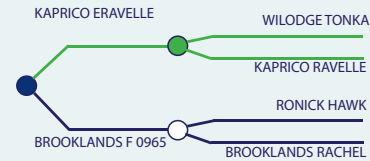
LIMIRLM215581331640

MYOSTATIN: 2 X F94L

13-APR-2017



- Marco Progeny are Born Small but Develop Rapidly
- Huge Farmer Satisfaction with Progeny Born on Irish Suckler Farms
- Marco Excels on Replacement €151 and Terminal €157
- Ideal Choice for Plainer Type Cows or Well Grown Maiden Heifers



Eurostar Index ICBF Jan 2022				
Within Breed	Index	€uro Value	Reliability	Across Breeds
★★★★★	Replacement	€151	57%	★★★★★
★★★★★	Terminal	€157	66%	★★★★★

Calving Difficulty		
When mated with:	Value	Reliability
Beef Heifers	8.2%	84%
Beef Cows	3.2%	96%

Expected Daughter Performance				
Within Breed	Key Profit Trait	Index Value	Reliability	Across Breeds
	Daughter CD	3.9%	63%	
★★★★★	Daughter Milk (Kg)	3.40	49%	★★★
★	Daughter CI (Days)	3.57	45%	★

Expected Progeny Performance				
Within Breed	Key Profit Trait	Index Value	Reliability	Across Breeds
★★★★★	Docility	0.04	94%	★★★★★
★★★★★	Carcass Weight	29.1Kg	63%	★★★★★
★★★★	Carcass Conformation	2.34	53%	★★★★★

BROOKLANDS ROWAN

LM7716

LIMIRLM215581351972

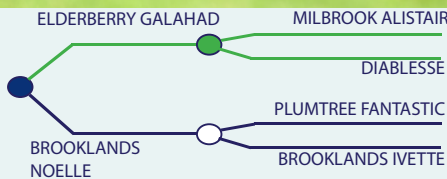
MYOSTATIN: 1 X F94L / 1 X Q204X

07-NOV-2020



Dam: Brooklands Noelle

Brooklands Rowan at 7 months



- Rowan Combines Four Generations of Well Proven Calving Ease
- A Son of The Famous EBY from a Cow with Plumtree Fantastic, Queenshead Altea and Ronick Hawk in her Lineage
- Lovely Naturally Muscled Bull with a Super Top Line



Eurostar Index ICBF Jan 2022				
Within Breed	Index	€uro Value	Reliability	Across Breeds
★★★★★	Replacement	€124	49%	★★★★★
★★★	Terminal	€122	50%	★★★★

Calving Difficulty		
When mated with:	Value	Reliability
Beef Heifers	7.0%	58%
Beef Cows	2.7%	72%

Expected Daughter Performance				
Within Breed	Key Profit Trait	Index Value	Reliability	Across Breeds
	Daughter CD	3.4%	63%	
★★	Daughter Milk (Kg)	-1.3	46%	★
★★★★★	Daughter CI (Days)	-0.65	45%	★★★

Expected Progeny Performance				
Within Breed	Key Profit Trait	Index Value	Reliability	Across Breeds
★★★★	Docility	-0.02	47%	★★
★★	Carcass Weight	19.5Kg	47%	★★★★★
★★★★	Carcass Conformation	2.24	46%	★★★★★

CASTLEVIEW CASINO (ET)

CWI

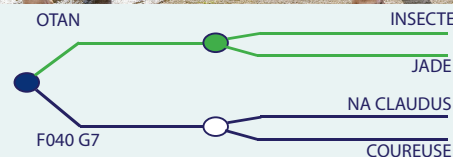
LIMIRLM191567170406

25-JAN-2007

MYOSTATIN: 2 X F94L



- What a Cow Breeder
- Casino Still Remains Ireland's Leading Proven Replacement Limousin Sire Available
- Replacement Index of €124 at 98% Rel.
- Combined Milk, Calving Ability & Fertility
- Casino Leaves Big, Powerful, Hard-Working Cows



Eurostar Index ICBF Jan 2022				
Within Breed	Index	€uro Value	Reliability	Across Breeds
★★★★★	Replacement	€124	98%	★★★★★
★★★	Terminal	€123	97%	★★★★

Calving Difficulty		
When mated with:	Value	Reliability
Beef Heifers	10.6%	99%
Beef Cows	4.5%	99%

Expected Daughter Performance				
Within Breed	Key Profit Trait	Index Value	Reliability	Across Breeds
	Daughter CD	3.8%	99%	
★★★★★	Daughter Milk (Kg)	1.30	99%	★★
★★★★★	Daughter CI (Days)	-1.68	98%	★★★★★

Expected Progeny Performance				
Within Breed	Key Profit Trait	Index Value	Reliability	Across Breeds
★★	Docility	-0.10	99%	★
★★★★★	Carcass Weight	25.3Kg	99%	★★★★★
★	Carcass Conformation	1.87	99%	★★★★★

CARROWREAGH PABLO

LM7077

LIMIRLM219211850524

03-SEP-2019

MYOSTATIN: 2 X F94L

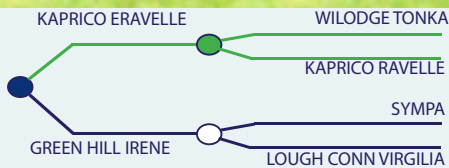


Sire: Kaprico Eravelle



MGS: Sympa

- Interesting New Limousin Bull Combining Proven Maternal & Easy Calving Bloodlines
- Pedigree Combines Eravelle, Sympa and the Noted French Maternal Bull Otan
- Pablo is a Big, Long, Powerful Bull with Excellent Plates & Squareness
- Purchased in Association with The Irish Limousin Cattle Society



Eurostar Index ICBF Jan 2022				
Within Breed	Index	€uro Value	Reliability	Across Breeds
★★★★★	Replacement	€141	48%	★★★★★
★★★★★	Terminal	€149	50%	★★★★★

Calving Difficulty		
When mated with:	Value	Reliability
Beef Heifers	5.5%	54%
Beef Cows	4.5%	72%

Expected Daughter Performance				
Within Breed	Key Profit Trait	Index Value	Reliability	Across Breeds
	Daughter CD	5%	62%	
★★★★★	Daughter Milk (Kg)	1.70	47%	★★★
★★★	Daughter CI (Days)	1.12	43%	★

Expected Progeny Performance				
Within Breed	Key Profit Trait	Index Value	Reliability	Across Breeds
★★★★★	Docility	-0.03	48%	★★
★★★★★	Carcass Weight	28.6Kg	47%	★★★★★
★★★★★	Carcass Conformation	2.47	47%	★★★★★

CAVELANDS JOLLY

LM2395

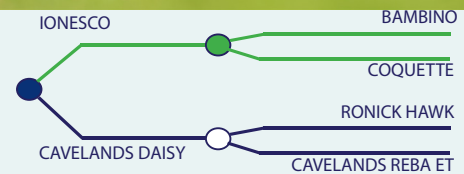
LIMIRLM271789790313

29-DEC-2014

MYOSTATIN: 2 X F94L



- Jolly Daughters are Performing Superbly in Irish Suckler Herds
- Daughters are Very Wide with Square Plates, Calving Ability & Milk
- Ideal Choice to Breed Replacements Without Compromising on Quality



Eurostar Index ICBF Jan 2022				
Within Breed	Index	€uro Value	Reliability	Across Breeds
★★★★★	Replacement	€115	88%	★★★★★
★★★	Terminal	€124	93%	★★★★★

Calving Difficulty		
When mated with:	Value	Reliability
Beef Heifers	10.5%	94%
Beef Cows	5.2%	99%



Expected Daughter Performance				
Within Breed	Key Profit Trait	Index Value	Reliability	Across Breeds
	Daughter CD	6.8%	87%	
★	Daughter Milk (Kg)	-3.40	94%	★
★★★★★	Daughter CI (Days)	-5.31	69%	★★★★★

Expected Progeny Performance				
Within Breed	Key Profit Trait	Index Value	Reliability	Across Breeds
★★★★★	Docility	0.01	99%	★★★
★★★	Carcass Weight	22.3Kg	99%	★★★★★
★★★★★	Carcass Conformation	2.30	99%	★★★★★

TOWNLEYHALL RUPERT

LM7719

LIMIRLM224588850650

24-APR-2020

MYOSTATIN: 2 X F94L

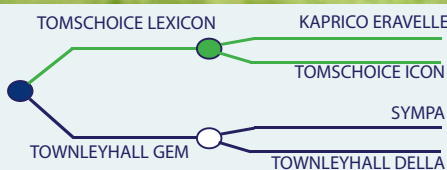


Sire: Tomschoice Lexicon



MGS: Sympa

- Well Balanced Son of Proven Easy Calving Tomschoice Lexicon
- Rupert is a Long, Growthy, Powerful Bull with a Superb Topline and Back End
- Purchased in Association with the Irish Limousin Cattle Society



Eurostar Index ICBF Jan 2022				
Within Breed	Index	€uro Value	Reliability	Across Breeds
★★★★★	Replacement	€131	44%	★★★★★
★★★	Terminal	€134	49%	★★★★★

Calving Difficulty		
When mated with:	Value	Reliability
Beef Heifers	6.7%	48%
Beef Cows	3.8%	71%

Expected Daughter Performance				
Within Breed	Key Profit Trait	Index Value	Reliability	Across Breeds
	Daughter CD	4.58%	56%	
★★★★★	Daughter Milk (Kg)	1.90	40%	★★★
★★★	Daughter CI (Days)	0.52	37%	★★

Expected Progeny Performance				
Within Breed	Key Profit Trait	Index Value	Reliability	Across Breeds
★★★	Docility	-0.05	46%	★★
★★★	Carcass Weight	23.4Kg	47%	★★★★★
★★★★★	Carcass Conformation	2.31	42%	★★★★★

CLADDAGH MCCABE (ET)

LM6529

LIMIRLM121756750030

MYOSTATIN: 2 X Q204X

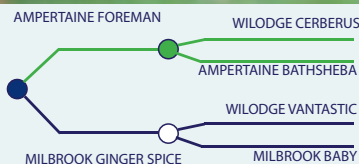
12-SEP-2017



First Claddagh McCabe Calf



- McCabe Combines a Double Q Gene and Average Calving Difficulty
- Dam is the World-Renowned Limousin Cow 'Millbrook Ginger Spice'
- Muscling, Style & Correctness in the One Package
- Huge Demand amongst Fatstock Show Producers & Pedigree Herds



Eurostar Index ICBF Jan 2022				
Within Breed	Index	Euro Value	Reliability	Across Breeds
★★★★★	Replacement	€136	49%	★★★★★
★★★★★	Terminal	€180	52%	★★★★★

Calving Difficulty		
When mated with:	Value	Reliability
Beef Heifers	10.2%	55%
Beef Cows	5.4%	74%

Expected Daughter Performance				
Within Breed	Key Profit Trait	Index Value	Reliability	Across Breeds
	Daughter CD	3.67%	63%	
★★★★★	Daughter Milk (Kg)	1.10	48%	★★
★★	Daughter CI (Days)	2.09	44%	★

Expected Progeny Performance				
Within Breed	Key Profit Trait	Index Value	Reliability	Across Breeds
★★★★★	Docility	0.02	49%	★★★
★★★★★	Carcass Weight	40.7Kg	51%	★★★★★
★★★★★	Carcass Conformation	2.83	49%	★★★★★

HALTCLIFFE NEWTON

LM4908

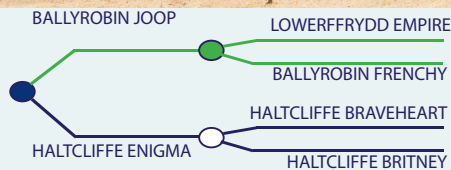
LIMGBRM100996101659

MYOSTATIN: 2 X F94L

19-MAY-2017



- Newton is Breeding Exceptional Suckler Progeny
- Progeny are Very Long, Muscular Cattle with Excellent Weight for Age
- Use on Medium Sized Cows to Breed High Value Weanlings



Eurostar Index ICBF Jan 2022				
Within Breed	Index	Euro Value	Reliability	Across Breeds
★	Replacement	€13	49%	★
★	Terminal	€106	64%	★★★

Calving Difficulty		
When mated with:	Value	Reliability
Beef Heifers	10.9%	49%
Beef Cows	8.2%	92%

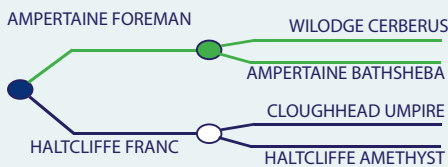
Expected Daughter Performance				
Within Breed	Key Profit Trait	Index Value	Reliability	Across Breeds
★	Daughter CD	5.22%	50%	
★	Daughter Milk (Kg)	-4.70	37%	★
★	Daughter CI (Days)	2.64	38%	★

Expected Progeny Performance				
Within Breed	Key Profit Trait	Index Value	Reliability	Across Breeds
★★★	Docility	-0.05	88%	★★
★★★★★	Carcass Weight	24.3Kg	63%	★★★★★
★★★★★	Carcass Conformation	2.50	53%	★★★★★

Limousin



- Madison Is the Bull to Breed Power, Muscle & Style
- First Son 'Ernevalley Rolex' (pictured) was Senior Champion at The Irish Limousin Premier Autumn 21 and Sold for €7,000
- Madison will Breed High Quality, Muscular Weanlings with Weight for Age
- Average Calving Difficulty on Suckler Cows



Eurostar Index ICBF Jan 2022				
Within Breed	Index	Euro Value	Reliability	Across Breeds
★	Replacement	€71	59%	★★
★★★★★	Terminal	€144	71%	★★★★★

Calving Difficulty		
When mated with:	Value	Reliability
Beef Heifers	15.1%	68%
Beef Cows	7.8%	96%

Expected Daughter Performance				
Within Breed	Key Profit Trait	Index Value	Reliability	Across Breeds
	Daughter CD	3.88%	63%	
★★★★★	Daughter Milk (Kg)	0.10	48%	★★
★	Daughter CI (Days)	3.31	46%	★

Expected Progeny Performance				
Within Breed	Key Profit Trait	Index Value	Reliability	Across Breeds
★★★★★	Docility	-0.06	94%	★
★★★★★	Carcass Weight	34.1Kg	72%	★★★★★
★★★★★	Carcass Conformation	2.83	63%	★★★★★

BIRCHPARK RUFUS

LM7713

LIMIRLM225564150178

29-JUN-2020

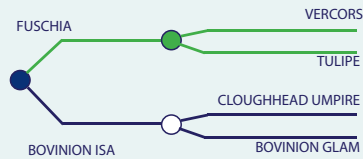
MYOSTATIN: 2 X F94L



Sire: Fuschia



- Exciting New Addition to Dovea's Ever Growing Limousin Stud
- Interesting Pedigree including Fuschia, Cloughhead Umpire & Wilodge Vantastic
- Rufus is a Very Stylish, Long Bull with a Super, Wide Topline & a Well Rounded End
- Purchased in Association with The Irish Limousin Cattle Society



NEW

Pedigree Royalty Sire

Eurostar Index ICBF Jan 2022				
Within Breed	Index	€uro Value	Reliability	Across Breeds
★★★★★	Replacement	€118	45%	★★★★★
★★★★★	Terminal	€160	48%	★★★★★

Calving Difficulty		
When mated with:	Value	Reliability
Beef Heifers	7.7%	46%
Beef Cows	2.4%	73%

Expected Daughter Performance				
Within Breed	Key Profit Trait	Index Value	Reliability	Across Breeds
	Daughter CD	5.17%	57%	
★★★	Daughter Milk (Kg)	-1.00	45%	★
★★★	Daughter CI (Days)	1.38	37%	★

Expected Progeny Performance				
Within Breed	Key Profit Trait	Index Value	Reliability	Across Breeds
★★★★★	Docility	-0.01	44%	★★
★★★★★	Carcass Weight	27.5Kg	47%	★★★★★
★★★★★	Carcass Conformation	2.71	42%	★★★★★

WILODGE JOSKINS

LM2188

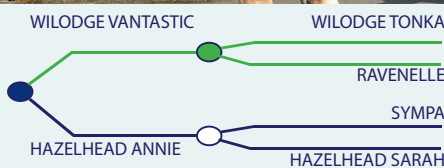
LIMGBRM00WEY14-1306

15-JAN-2014

MYOSTATIN: 1 X F94L / 1 X Q204X



- Consistent Producer of Exceptional Limousin Show Cattle
- Daughters Are Really Well-Balanced, Combining Style, Shape & Milk
- Sired Numerous High Priced Commercial Progeny Throughout 2021



Pedigree Royalty Sire

Eurostar Index ICBF Jan 2022				
Within Breed	Index	€uro Value	Reliability	Across Breeds
★	Replacement	€19	88%	★
★★	Terminal	€120	92%	★★★★

Calving Difficulty		
When mated with:	Value	Reliability
Beef Heifers	19.5%	87%
Beef Cows	12.4%	99%

Expected Daughter Performance				
Within Breed	Key Profit Trait	Index Value	Reliability	Across Breeds
	Daughter CD	3.79%	86%	
★	Daughter Milk (Kg)	-6.30	94%	★
★★	Daughter CI (Days)	2.31	72%	★

Expected Progeny Performance				
Within Breed	Key Profit Trait	Index Value	Reliability	Across Breeds
★★★	Docility	-0.05	99%	★★
★★★★★	Carcass Weight	33.6Kg	99%	★★★★★
★★★★★	Carcass Conformation	2.72	99%	★★★★★

Limousin

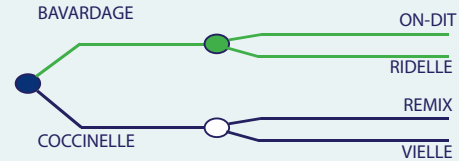
IVANTONOV

LIMFRAM008749281004

LM5887

10-NOV-2013

MYOSTATIN: 2 X F94L



- High Index Replacement Sire €143 with a Whopping Milk Figure Of +7.3 Kgs
- Proven Easy Calver in France 119 for Calving at 98% Reliability
- Sired by the Famous Maternal Bavardage from a Remix Cow
- Use Ivantonov to Breed Replacements



Eurostar Index ICBF Jan 2022				
Within Breed	Index	€uro Value	Reliability	Across Breeds
★★★★★	Replacement	€143	51%	★★★★★
★★★	Terminal	€119	59%	★★★★

Calving Difficulty		
When mated with:	Value	Reliability
Beef Heifers	2.9%	50%
Beef Cows	2.2%	83%

Expected Daughter Performance				
Within Breed	Key Profit Trait	Index Value	Reliability	Across Breeds
	Daughter CD	4.36%	63%	
★★★★★	Daughter Milk (Kg)	7.30	50%	★★★★★
★	Daughter CI (Days)	3.75	41%	★

Expected Progeny Performance				
Within Breed	Key Profit Trait	Index Value	Reliability	Across Breeds
★★★	Docility	-0.05	50%	★★
★	Carcass Weight	16.4Kg	61%	★★★
★★★	Carcass Conformation	2.17	56%	★★★★★

FEST NOZ

LIMFRAM005382582099

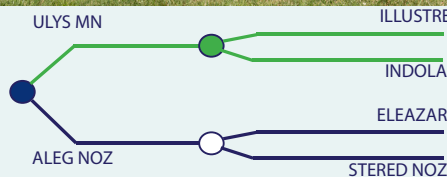
LM5878

06-SEP-2010

MYOSTATIN: 2 X F94L



- Easy Calving, Proven French Sire
- Reports on Fest Noz Progeny in Ireland are Excellent
- Outcross, Well Proven French Maternal Pedigree
- Ideal Choice for Pedigree & Commercial Cows to Breed Replacements



Eurostar Index ICBF Jan 2022				
Within Breed	Index	€uro Value	Reliability	Across Breeds
★★★★★	Replacement	€136	53%	★★★★★
★★★	Terminal	€125	65%	★★★★

Calving Difficulty		
When mated with:	Value	Reliability
Beef Heifers	6.9%	50%
Beef Cows	2.5%	86%

Expected Daughter Performance				
Within Breed	Key Profit Trait	Index Value	Reliability	Across Breeds
	Daughter CD	5.16%	62%	
★★★★★	Daughter Milk (Kg)	6.50	58%	★★★★★
★★	Daughter CI (Days)	1.82	38%	★

Expected Progeny Performance				
Within Breed	Key Profit Trait	Index Value	Reliability	Across Breeds
★★★	Docility	-0.06	60%	★
★★★	Carcass Weight	23.1Kg	69%	★★★★★
★★	Carcass Conformation	2.06	68%	★★★★★

MULLARY INTREPID

LM4093

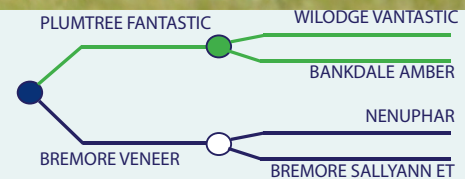
LIMIRLM261020830054

MYOSTATIN: 1 X F94L / 1 X NT821

20-JAN-2013



- Son of the Noted Plumtree Fantastic
- Progeny are Medium Sized with Loads of Muscle & Style
- Average Calving Difficulty



Eurostar Index ICBF Jan 2022				
Within Breed	Index	Euro Value	Reliability	Across Breeds
★	Replacement	€59	80%	★★
★★★	Terminal	€124	88%	★★★★

Calving Difficulty		
When mated with:	Value	Reliability
Beef Heifers	11.6%	83%
Beef Cows	5.3%	96%

Expected Daughter Performance				
Within Breed	Key Profit Trait	Index Value	Reliability	Across Breeds
	Daughter CD	4.25%	75%	
★	Daughter Milk (Kg)	-4.00	81%	★
★	Daughter CI (Days)	2.94	57%	★

Expected Progeny Performance				
Within Breed	Key Profit Trait	Index Value	Reliability	Across Breeds
★★	Docility	-0.10	95%	★
★★★★	Carcass Weight	26Kg	97%	★★★★★
★★★★★	Carcass Conformation	2.37	96%	★★★★★

KNOCKMAHON OPEL

CH6292

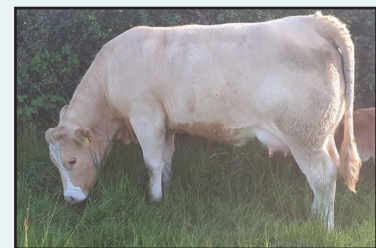
CHAIRLM213018992296

MYOSTATIN: FREE

11-DEC-2018

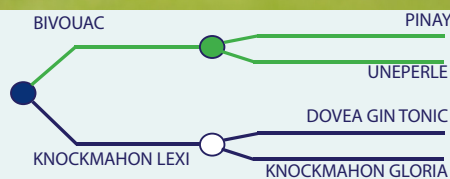


Sire: Bivouac



Bivouac Daughter

- Opel was Selected for the Growing Easy Calving Market
- Sired by the Noted Easy Calving 'Bivouac' from a Gin Tonic Cow
- Long, Powerful, Correct Bull with a Beautiful Head



Eurostar Index ICBF Jan 2022				
Within Breed	Index	Euro Value	Reliability	Across Breeds
★★★★★	Replacement	€103	48%	★★★★★
★★	Terminal	€119	50%	★★★★★

Calving Difficulty		
When mated with:	Value	Reliability
Beef Heifers	9.0%	49%
Beef Cows	6.1%	72%

Expected Daughter Performance				
Within Breed	Key Profit Trait	Index Value	Reliability	Across Breeds
	Daughter CD	5.42%	60%	
★★★★★	Daughter Milk (Kg)	-1.60	48%	★
★★★★★	Daughter CI (Days)	-2.98	41%	★★★★★

Expected Progeny Performance				
Within Breed	Key Profit Trait	Index Value	Reliability	Across Breeds
★★★★★	Docility	0.11	47%	★★★★★
★★	Carcass Weight	30.5Kg	47%	★★★★★
★	Carcass Conformation	1.70	46%	★★★★

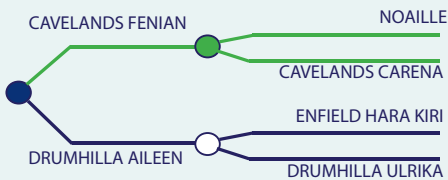
Progressive Ataxia 1 Copy

Charolais





- Incredibly Easy Calving Proven Charolais Sire
 - o 4.3% on Beef Cows
- Both Pedigree and Commercial Progeny are Impressive
- Mark will Improve Growth Rates & Fleshing Abilities
- Ideal Choice for Second Calving Suckler Cows or Well Grown, Pedigree Maiden Heifers



Eurostar Index ICBF Jan 2022				
Within Breed	Index	€uro Value	Reliability	Across Breeds
★★★★	Replacement	€94	82%	★★★★
★★★	Terminal	€132	92%	★★★★★

Calving Difficulty		
When mated with:	Value	Reliability
Beef Heifers	8.8%	87%
Beef Cows	4.3%	99%

Expected Daughter Performance				
Within Breed	Key Profit Trait	Index Value	Reliability	Across Breeds
	Daughter CD	3.71%	72%	
★★	Daughter Milk (Kg)	-5.40	85%	★
★★★★★	Daughter CI (Days)	-3.59	57%	★★★★★

Expected Progeny Performance				
Within Breed	Key Profit Trait	Index Value	Reliability	Across Breeds
★★	Docility	0.00	99%	★★★★
★★★★	Carcass Weight	32.9Kg	99%	★★★★★
★★★★	Carcass Conformation	1.94	99%	★★★★★
	Progressive Ataxia			Free

GLEN LEON

CHAIRLM181845281117

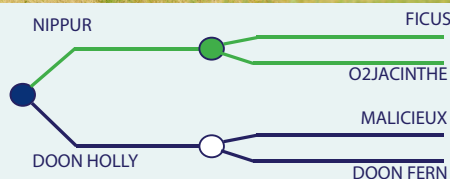
MYOSTATIN: FREE

CH4158

03-JUN-2015



- Huge Farmer Satisfaction with Leon's Progeny
- Breeding Super Calves with Bone, Power and Muscle
- Leon Progeny Are Exceptionally Docile (Top 5% Across Breed)
- Average Calving Difficulty on Suckler Cows



Eurostar Index ICBF Jan 2022				
Within Breed	Index	€uro Value	Reliability	Across Breeds
★★	Replacement	€54	79%	★
★	Terminal	€109	90%	★★★

Calving Difficulty		
When mated with:	Value	Reliability
Beef Heifers	12.8%	65%
Beef Cows	7.9%	97%

Expected Daughter Performance				
Within Breed	Key Profit Trait	Index Value	Reliability	Across Breeds
	Daughter CD	3.95%	69%	
★	Daughter Milk (Kg)	-10.4	78%	★
★★★★★	Daughter CI (Days)	-3.91	56%	★★★★★

Expected Progeny Performance				
Within Breed	Key Profit Trait	Index Value	Reliability	Across Breeds
★★★★★	Docility	0.15	97%	★★★★★
★★	Carcass Weight	29.8Kg	98%	★★★★★
★★★	Carcass Conformation	1.85	97%	★★★★★

Progressive Ataxia 1 Copy

OCELOT

CHAFRAM008574756142

MYOSTATIN: 1 X F94L

CH5827

04-MAR-2018

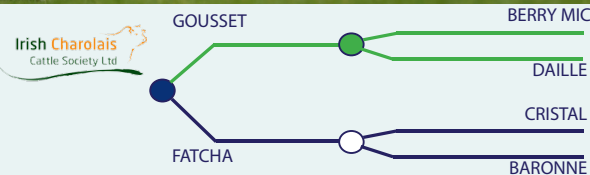


Dam: Fatcha



Sire: Gousset

- Ocelot was Purchased by the Irish Charolais Society from France
- From an Exceptional Cow 'Fatcha' that has bred Champions in France
- Beautiful Charolais Type Bull with Excellent Structure



Eurostar Index ICBF Jan 2022				
Within Breed	Index	€uro Value	Reliability	Across Breeds
★★	Replacement	€41	41%	★
★★	Terminal	€122	48%	★★★★

Calving Difficulty		
When mated with:	Value	Reliability
Beef Heifers	10.9%	34%
Beef Cows	7.7%	79%

Expected Daughter Performance				
Within Breed	Key Profit Trait	Index Value	Reliability	Across Breeds
	Daughter CD	5.84%	51%	
★★	Daughter Milk (Kg)	-4.30	39%	★
★★★	Daughter CI (Days)	-1.27	32%	★★★

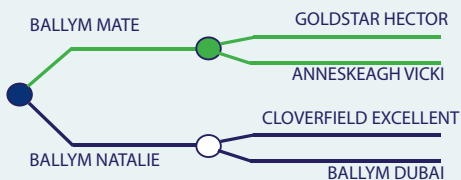
Expected Progeny Performance				
Within Breed	Key Profit Trait	Index Value	Reliability	Across Breeds
★★★	Docility	0.04	45%	★★★★★
★★★★★	Carcass Weight	38.7Kg	48%	★★★★★
★	Carcass Conformation	1.53	44%	★★★★

Progressive Ataxia Free





- Possibly the Most Exciting Charolais Bull to Enter Irish A.I for Some Years
- Overall Senior Champion at The Irish Charolais Sale Tullamore November 2021 when Purchased for Top Price of €12,800
- Rocco is a Perfect Example of the Charolais Breed
- He Displays Impressive Muscle with Length, Width & a Great Charolais Head
- Semen Available April 2022



Eurostar Index ICBF Jan 2022				
Within Breed	Index	Euro Value	Reliability	Across Breeds
★★	Replacement	€47	41%	★
★★★★★	Terminal	€174	43%	★★★★★

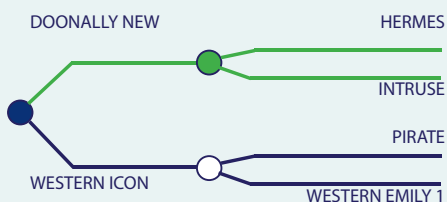
Calving Difficulty		
When mated with:	Value	Reliability
Beef Heifers	11.8%	47%
Beef Cows	7.4%	69%

Expected Daughter Performance				
Within Breed	Key Profit Trait	Index Value	Reliability	Across Breeds
	Daughter CD	5%	56%	
★	Daughter Milk (Kg)	-10.20	38%	★
★★★★★	Daughter CI (Days)	-3.74	36%	★★★★★

Expected Progeny Performance				
Within Breed	Key Profit Trait	Index Value	Reliability	Across Breeds
★	Docility	-0.03	39%	★★
★★★★★	Carcass Weight	47.7Kg	40%	★★★★★
★★★★★	Carcass Conformation	2.44	39%	★★★★★
	Progressive Ataxia			Free



- Muscle, Power & Style in The One Package
- Son Of the Renowned 'Doonally New'
- Heavily Muscled Progeny with Exceptional Bone & Weight for Age
- Use Orpheus on Mature Suckler Cows to Breed Top Notch Weanlings



Eurostar Index ICBF Jan 2022

Within Breed	Index	€uro Value	Reliability	Across Breeds
★	Replacement	-€7	57%	★
★★★★★	Terminal	€147	64%	★★★★★

Calving Difficulty

When mated with:	Value	Reliability
Beef Heifers	19.2%	58%
Beef Cows	9.6%	95%

Expected Daughter Performance

Within Breed	Key Profit Trait	Index Value	Reliability	Across Breeds
	Daughter CD	5.44%	66%	
★	Daughter Milk (Kg)	-8.00	48%	★
★	Daughter CI (Days)	2.11	48%	★

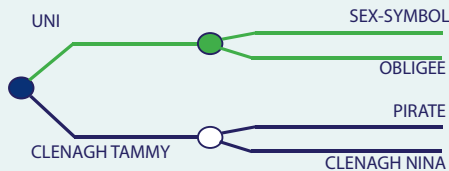
Expected Progeny Performance

Within Breed	Key Profit Trait	Index Value	Reliability	Across Breeds
★★★★★	Docility	0.09	90%	★★★★★
★★★★★	Carcass Weight	45.5Kg	60%	★★★★★
★★★★★	Carcass Conformation	2.06	51%	★★★★★

Progressive Ataxia | Awaiting Results



- Jasper is Breeding Excellent Weanlings Ideal for High Value Markets
- High Index Sire on Carcass Conformation (Top 5% Across Breeds)
- Average Calving Difficulty
- Calving Ease, Style and Muscle in the One Package



Eurostar Index ICBF Jan 2022				
Within Breed	Index	Euro Value	Reliability	Across Breeds
★★	Replacement	€45	83%	★
★	Terminal	€109	91%	★★★

Calving Difficulty		
When mated with:	Value	Reliability
Beef Heifers	12.9%	80%
Beef Cows	7.1%	99%

Expected Daughter Performance				
Within Breed	Key Profit Trait	Index Value	Reliability	Across Breeds
	Daughter CD	3.51%	74%	
★	Daughter Milk (Kg)	-8.40	89%	★
★★★★★	Daughter CI (Days)	-4.59	58%	★★★★★

Expected Progeny Performance				
Within Breed	Key Profit Trait	Index Value	Reliability	Across Breeds
★★	Docility	0.02	99%	★★★★
★	Carcass Weight	26.2Kg	99%	★★★★★
★★★★★	Carcass Conformation	2.11	99%	★★★★★
	Progressive Ataxia			Free

LAHEENS MASTER

CHAIRLM231362540447

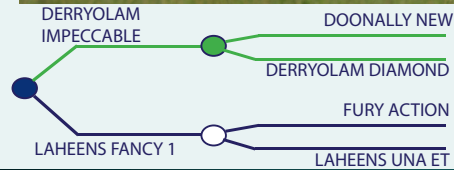
CH5046

12-NOV-2016

MYOSTATIN: 1 X Q204X



- Master Is an Exceptional Terminal Sire
- High Index on All Carcass Traits
- Progeny are Very Smart with Excellent Muscling
- Average Calving Difficulty on Suckler Cows



Eurostar Index ICBF Jan 2022				
Within Breed	Index	€uro Value	Reliability	Across Breeds
★★	Replacement	€58	52%	★★
★★★	Terminal	€130	57%	★★★★

Calving Difficulty		
When mated with:	Value	Reliability
Beef Heifers	18.6%	46%
Beef Cows	8.7%	82%

Expected Daughter Performance				
Within Breed	Key Profit Trait	Index Value	Reliability	Across Breeds
	Daughter CD	5.04%	62%	
★★★	Daughter Milk (Kg)	-3.70	48%	★
★★	Daughter CI (Days)	-0.42	42%	★★★

Expected Progeny Performance				
Within Breed	Key Profit Trait	Index Value	Reliability	Across Breeds
★★★★★	Docility	0.21	65%	★★★★★
★★	Carcass Weight	32.5Kg	58%	★★★★★
★★★★★	Carcass Conformation	2.20	50%	★★★★★

Progressive Ataxia Awaiting Results

LEBONVO

CHAFRAM001423175165

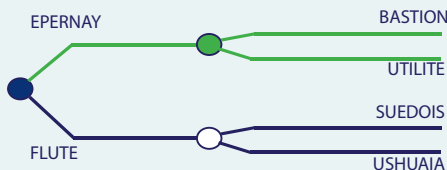
CH5872

09-NOV-2015

MYOSTATIN: FREE



- Balanced French Sire Between Terminal & Maternal Traits
- Exceptional Proven French Figures
 - o Overall Maternal 120
 - o Milk 110
 - o Growth 111
 - o Calving 105
- Total Outcross Pedigree for Irish Breeders



Eurostar Index ICBF Jan 2022				
Within Breed	Index	€uro Value	Reliability	Across Breeds
★★★★★	Replacement	€109	42%	★★★★★
★★★	Terminal	€127	50%	★★★★

Calving Difficulty		
When mated with:	Value	Reliability
Beef Heifers	14.9%	29%
Beef Cows	6.6%	79%

Expected Daughter Performance				
Within Breed	Key Profit Trait	Index Value	Reliability	Across Breeds
	Daughter CD	2.61%	52%	
★★★★★	Daughter Milk (Kg)	5.60	45%	★★★★★
★★★★	Daughter CI (Days)	-2.02	31%	★★★★

Expected Progeny Performance				
Within Breed	Key Profit Trait	Index Value	Reliability	Across Breeds
★★★★★	Docility	0.06	32%	★★★★★
★★★★★	Carcass Weight	40.6Kg	50%	★★★★★
★	Carcass Conformation	1.55	49%	★★★★

Progressive Ataxia Free

Charolais Specials



MAGIQUE

CHAFRAM008843788346

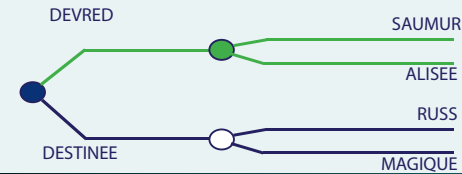
CH7830

06-NOV-2016

MYOSTATIN: 2 X F94L



- A Special New Charolais Bull for Irish Breeders
- Stylish Muscular French Bull with Serious Growth Rates
- Growth 118
- Muscle 124
- Skeletal 111
- Calving 96
- Use on Mature Charolais Cows



Eurostar Index ICBF Jan 2022				
Within Breed	Index	€uro Value	Reliability	Across Breeds
★★★	Replacement	€73	38%	★★
★★★★	Terminal	€135	42%	★★★★★

Calving Difficulty		
When mated with:	Value	Reliability
Beef Heifers	12.4%	31%
Beef Cows	3.7%	67%

Expected Daughter Performance				
Within Breed	Key Profit Trait	Index Value	Reliability	Across Breeds
	Daughter CD	5.37%	51%	
★★★★★	Daughter Milk (Kg)	-0.10	40%	★★
★★★	Daughter CI (Days)	-0.94	32%	★★★

Expected Progeny Performance				
Within Breed	Key Profit Trait	Index Value	Reliability	Across Breeds
★★★	Docility	0.04	33%	★★★★★
★★★★★	Carcass Weight	36.7Kg	40%	★★★★★
★	Carcass Conformation	1.42	40%	★★★
	Progressive Ataxia			Free

HARESTONE HERCULES

CHAGBRM521516701424

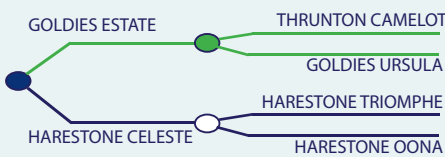
S2163

11-APR-2012

MYOSTATIN: 1 X F94L / 1 X Q204X



- Hugely Popular Choice for Pedigree Breeders In 2021
- Daughters are Top Breeders with Milk and Calving Ability
- Super Indices on All Traits both Terminal and Replacement
- Ideal Choice for Smaller, Muscly Type Pedigree Cows



Eurostar Index ICBF Jan 2022				
Within Breed	Index	€uro Value	Reliability	Across Breeds
★★★★★	Replacement	€101	57%	★★★★★
★★★★★	Terminal	€146	67%	★★★★★

Calving Difficulty		
When mated with:	Value	Reliability
Beef Heifers	18.6%	32%
Beef Cows	7.4%	79%

Expected Daughter Performance				
Within Breed	Key Profit Trait	Index Value	Reliability	Across Breeds
	Daughter CD	5.81%	53%	
★★★★★	Daughter Milk (Kg)	5.30	54%	★★★★★
★	Daughter CI (Days)	2.82	40%	★

Expected Progeny Performance				
Within Breed	Key Profit Trait	Index Value	Reliability	Across Breeds
★★★	Docility	0.03	67%	★★★
★★★★★	Carcass Weight	47.4Kg	76%	★★★★★
★★★	Carcass Conformation	1.93	69%	★★★★★
	Progressive Ataxia			Free

INVERLOCHY FERDIE

S1381

CHAGBRM522636100781

MYOSTATIN: 1 X F94L / 1 X Q204X

14-AUG-2010

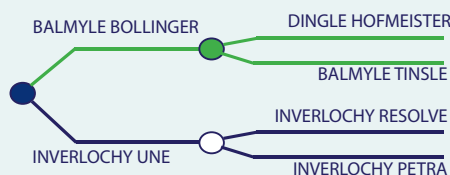


- Muscle, Length and Style in the One Package

- Pedigree Daughters are Breeding Well



Use Ferdie on Plainer Cows for Best Results



Eurostar Index ICBF Jan 2022				
Within Breed	Index	€uro Value	Reliability	Across Breeds
★	Replacement	-€6	84%	★
★★★	Terminal	€133	89%	★★★★★

Calving Difficulty		
When mated with:	Value	Reliability
Beef Heifers	21.1%	78%
Beef Cows	10.6%	97%

Expected Daughter Performance				
Within Breed	Key Profit Trait	Index Value	Reliability	Across Breeds
	Daughter CD	4.24%	80%	
★★★★★	Daughter Milk (Kg)	0.30	88%	★★
★	Daughter CI (Days)	6.98	63%	★

Expected Progeny Performance				
Within Breed	Key Profit Trait	Index Value	Reliability	Across Breeds
★★★	Docility	0.02	96%	★★★
★★★★★	Carcass Weight	44.7Kg	98%	★★★★★
★★★★★	Carcass Conformation	2.38	97%	★★★★★
	Progressive Ataxia		Awaiting Results	

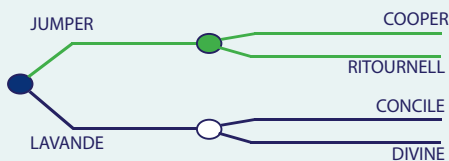
TOMBAPIK

CH4202

CHAFRAM006464149921

MYOSTATIN: FREE

18-DEC-2002



- Irelands No.1 Proven Charolais Sire Available on Daughter Milk at +9.9 Kgs
- Huge Replacement Index of €151
- Progeny Are Tall, Correct, Functional Cattle with Excellent Weight for Age
- Ideal Choice for Muscular Pedigree Cows to Improve Maternal Traits

Eurostar Index ICBF Jan 2022				
Within Breed	Index	€uro Value	Reliability	Across Breeds
★★★★★	Replacement	€151	86%	★★★★★
★★	Terminal	€119	91%	★★★★

Calving Difficulty		
When mated with:	Value	Reliability
Beef Heifers	13.6%	81%
Beef Cows	6.9%	98%

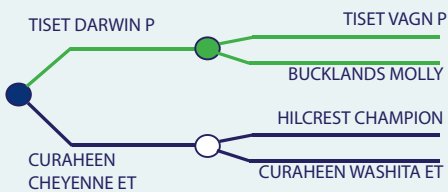
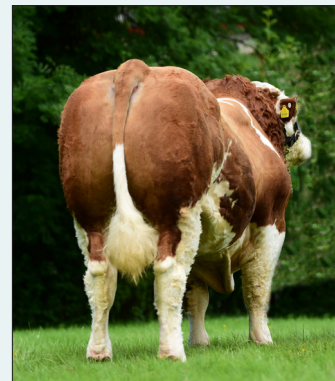
Expected Daughter Performance				
Within Breed	Key Profit Trait	Index Value	Reliability	Across Breeds
	Daughter CD	3.06%	81%	
★★★★★	Daughter Milk (Kg)	9.90	92%	★★★★★
★★	Daughter CI (Days)	-0.05	64%	★★

Expected Progeny Performance				
Within Breed	Key Profit Trait	Index Value	Reliability	Across Breeds
★★★★	Docility	0.07	96%	★★★★
★★★★★	Carcass Weight	40.6Kg	98%	★★★★★
★	Carcass Conformation	1.67	97%	★★★★
	Progressive Ataxia		Free	





- Ireland's No.1 Simmental Bull Available on Replacement Active Bull List
- €202 Replacement Index at 86% Rel.
- Gunshot is Breeding Serious Shape, Weight for Age & Docility
- The Ultimate Simmental Choice to Breed Replacements Without Compromising on Quality



Eurostar Index ICBF Jan 2022				
Within Breed	Index	Euro Value	Reliability	Across Breeds
★★★★★	Replacement	€202	86%	★★★★★
★★★★★	Terminal	€111	93%	★★★★★

Calving Difficulty		
When mated with:	Value	Reliability
Beef Heifers	14.2%	86%
Beef Cows	7.5%	99%

Expected Daughter Performance				
Within Breed	Key Profit Trait	Index Value	Reliability	Across Breeds
	Daughter CD	6.08%	80%	
★★★	Daughter Milk (Kg)	8.30	93%	★★★★★
★★★★★	Daughter CI (Days)	-5.31	60%	★★★★★

Expected Progeny Performance				
Within Breed	Key Profit Trait	Index Value	Reliability	Across Breeds
★★★★★	Docility	0.14	99%	★★★★★
★★★★★	Carcass Weight	34.9Kg	99%	★★★★★
★★★★★	Carcass Conformation	1.85	99%	★★★★★

CLONAGH LONGSHOT FAB P ET

SI7353

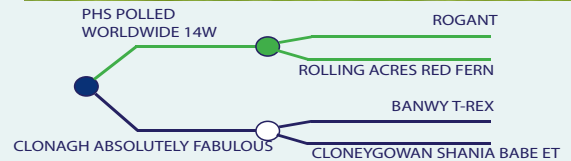
SIMIRLM213054191623

MYOSTATIN: FREE

04-DEC-2019



Dam: Clonagh Absolutely Fabulous



- Longshot Fab P is a Heterozygous Polled Son of the Outcross Bull "PHS Polled Worldwide"
- Dam "Absolutely Fabulous" has Claimed Numerous National Titles
- Outstanding Milk & Carcass Figures

NEW

Pedigree Royalty Sire

Eurostar Index ICBF Jan 2022				
Within Breed	Index	€uro Value	Reliability	Across Breeds
★★★★	Replacement	€146	44%	★★★★★
★★★★★	Terminal	€104	47%	★★★

Calving Difficulty		
When mated with:	Value	Reliability
Beef Heifers	8.1%	40%
Beef Cows	3.6%	67%

Expected Daughter Performance				
Within Breed	Key Profit Trait	Index Value	Reliability	Across Breeds
	Daughter CD	4.01%	56%	
★★★★	Daughter Milk (Kg)	10.50	44%	★★★★★
★	Daughter CI (Days)	0.96	37%	★

Expected Progeny Performance				
Within Breed	Key Profit Trait	Index Value	Reliability	Across Breeds
★★★	Docility	0.06	43%	★★★★★
★★★★★	Carcass Weight	28.7Kg	47%	★★★★★
★★★	Carcass Conformation	1.32	42%	★★★

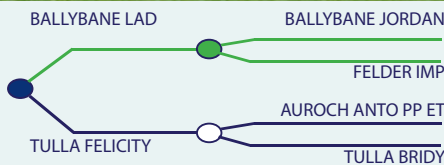
TULLA HARRY POTTER

SI4336

SIMIRLM131828020938

MYOSTATIN: FREE

21-APR-2016



- Very Easy Calving Simmental Sire
- 2.6% Calving Difficulty on Beef Cows
- Excels on Daughter Milk at +9.1 Kgs
- Breeding Medium Sized, Quality Calves
- Outcross Bloodline

Easy Calving

Eurostar Index ICBF Jan 2022				
Within Breed	Index	€uro Value	Reliability	Across Breeds
★★	Replacement	€107	54%	★★★★★
★	Terminal	€50	63%	★

Calving Difficulty		
When mated with:	Value	Reliability
Beef Heifers	5.6%	56%
Beef Cows	2.6%	77%

Expected Daughter Performance				
Within Breed	Key Profit Trait	Index Value	Reliability	Across Breeds
	Daughter CD	5.47%	63%	
★★★★	Daughter Milk (Kg)	9.10	49%	★★★★★
★★★★★	Daughter CI (Days)	-2.71	47%	★★★★★

Expected Progeny Performance				
Within Breed	Key Profit Trait	Index Value	Reliability	Across Breeds
★★	Docility	0.03	55%	★★★
★	Carcass Weight	14.5Kg	65%	★★
★★	Carcass Conformation	1.05	59%	★★

CLONAGH LUCKY HANSOME (ET) SI7350

SIMIRLM213054181597

MYOSTATIN: FREE

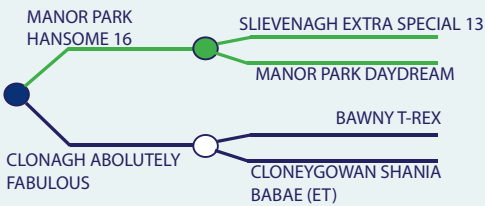
21-SEP-2019



- Lucky Hansome is a Super New Addition to Dovea's Beef Stud
- Sired by the £22,000 Manor Park Hansome (Pictured)
- Serious Power, Length, Width & Style to Lucky Hansome
- Outcross Pedigree for Most Irish Breeders



Sire: Manor Park Hansome



NEW

**Pedigree
Royalty
Sire**



Dam: Clonagh Absolutely Fabulous

Eurostar Index ICBF Jan 2022				
Within Breed	Index	Euro Value	Reliability	Across Breeds
★★★	Replacement	€137	42%	★★★★★
★★★★★	Terminal	€115	47%	★★★★★

Calving Difficulty		
When mated with:	Value	Reliability
Beef Heifers	6.8%	43%
Beef Cows	2.6%	70%

Expected Daughter Performance				
Within Breed	Key Profit Trait	Index Value	Reliability	Across Breeds
	Daughter CD	4.67%	55%	
★★★★★	Daughter Milk (Kg)	11.20	41%	★★★★★
★	Daughter CI (Days)	1.37	35%	★

Expected Progeny Performance				
Within Breed	Key Profit Trait	Index Value	Reliability	Across Breeds
★★★	Dolcility	0.06	43%	★★★★★
★★★★★	Carcass Weight	32.5Kg	47%	★★★★★
★★★★★	Carcass Conformation	1.44	40%	★★★★

Simmental

CONMELVIN OLLIE

HE4105

HERIRLM241427991478

25-SEP-2015

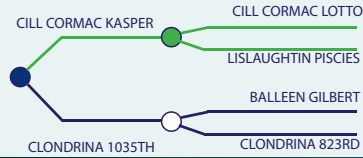
MYOSTATIN: FREE



Left: Full Brother



- High Index Replacement Sire at €107, Combined with Excellent Daughter Milk & Fertility
- Progeny are Medium Sized with Great Thickness, Hair & Easy Fleshing Ability
- Easy Calving Traditional Hereford Sire



Eurostar Index ICBF Jan 2022				
Within Breed	Index	€uro Value	Reliability	Across Breeds
★★★★★	Replacement	€107	74%	★★★★★
★★★	Terminal	€45	89%	★

Calving Difficulty		
When mated with:	Value	Reliability
Beef Heifers	7.5%	79%
Beef Cows	2.5%	92%

Expected Daughter Performance				
Within Breed	Key Profit Trait	Index Value	Reliability	Across Breeds
	Daughter CD	6.93%	72%	
★★★★★	Daughter Milk (Kg)	4.60	68%	★★★★★
★★★★★	Daughter CI (Days)	-7.23	55%	★★★★★

Expected Progeny Performance				
Within Breed	Key Profit Trait	Index Value	Reliability	Across Breeds
★★★★★	Docility	0.17	85%	★★★★★
★★	Carcass Weight	2.2Kg	99%	★
★★★★★	Carcass Conformation	0.70	99%	★

CORLISMORE CORMAC 076

HE7548

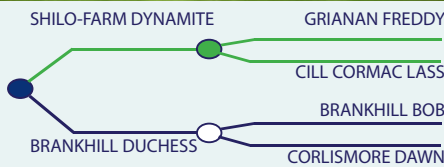
HERIRLM214481691076

16-JAN-2020

MYOSTATIN: FREE



Sire: Shiloh-Farm Dynamite



- Cormac Displays All the Great Attributes of the Hereford Breed
- Very Well-Made Bull with Length, Width & Breed Character
- Purchased in Association with Irish Hereford Prime for their Beef Sustainability Programme
- Similar Type Bull to the Old Favourite "GGM"



Eurostar Index ICBF Jan 2022				
Within Breed	Index	€uro Value	Reliability	Across Breeds
★	Replacement	€49	43%	★
★★★★	Terminal	€55	46%	★★

Calving Difficulty		
When mated with:	Value	Reliability
Beef Heifers	5.4%	43%
Beef Cows	2.1%	65%

Expected Daughter Performance				
Within Breed	Key Profit Trait	Index Value	Reliability	Across Breeds
	Daughter CD	5.64%	57%	
★	Daughter Milk (Kg)	2.10	41%	★★★
★	Daughter CI (Days)	-1.52	36%	★★★★

Expected Progeny Performance				
Within Breed	Key Profit Trait	Index Value	Reliability	Across Breeds
★★★★★	Docility	0.15	38%	★★★★★
★★★★★	Carcass Weight	6.7Kg	48%	★
★★★	Carcass Conformation	0.51	39%	★

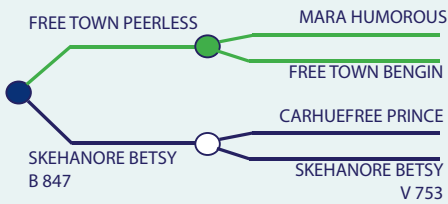




- Sire "Free Town Peerless" was National Champion in 2021 (Pictured)
- Fruitful is a Great, Long, Correct Bull with a Super Top Line
- One of the Highest Hereford Bulls Available on Dairy Beef Index at €81
- Purchased in Association with Irish Hereford Prime for their Beef Sustainability Programme



Sire: Free Town Peerless



Eurostar Index ICBF Jan 2022				
Within Breed	Index	€uro Value	Reliability	Across Breeds
★★★	Replacement	€78	40%	★★
★★★★★	Terminal	€83	45%	★★★★

Calving Difficulty		
When mated with:	Value	Reliability
Beef Heifers	3.0%	47%
Beef Cows	1.9%	67%

Expected Daughter Performance				
Within Breed	Key Profit Trait	Index Value	Reliability	Across Breeds
	Daughter CD	5.83%	57%	
★★★	Daughter Milk (Kg)	3.40	37%	★★★★
★★	Daughter CI (Days)	-3.22	36%	★★★★★★

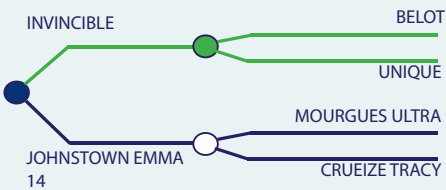
Expected Progeny Performance				
Within Breed	Key Profit Trait	Index Value	Reliability	Across Breeds
★★	Docility	0.08	36%	★★★★★
★★★★★★	Carcass Weight	12.5Kg	46%	★★
★★★	Carcass Conformation	0.51	38%	★



- Incredible Aubrac Sire on All Indices
 - Replacement €217
 - Terminal €149
 - Dairy Beef €146

- Nelson Himself has Developed Well with Excellent Shape

- First Crop of Calves due Spring 2022



Dam: Johnstown Emma 14



MGS: Mourgues Ultra

Eurostar Index ICBF Jan 2022					Calving Difficulty				
Within Breed	Index	€uro Value	Reliability	Across Breeds	When mated with:	Value	Reliability		
★★★★★	Replacement	€217	47%	★★★★★	Beef Heifers	5.5%	44%		
★★★★★	Terminal	€149	49%	★★★★★	Beef Cows	1.8%	70%		
Expected Daughter Performance					Expected Progeny Performance				
Within Breed	Key Profit Trait	Index Value	Reliability	Across Breeds	Within Breed	Key Profit Trait	Index Value	Reliability	Across Breeds
	Daughter CD	6.4%	55%		★★★★★	Docility	0.13	48%	★★★★★
★★★★★	Daughter Milk (Kg)	5.60	46%	★★★★★	★★★★★	Carcass Weight	23.7Kg	47%	★★★★★
★★	Daughter CI (Days)	-2.36	38%	★★★★★	★★★★★	Carcass Conformation	2.36	46%	★★★★★

GLACON

BAQFRAM006413181065

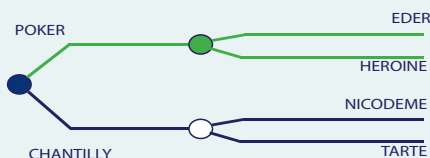
MYOSTATIN: FREE

BA4661

05-SEP-2011



- Ireland's Most Popular Blonde AI Sire
- Huge Terminal Index of €140 Combined with Top 1% Across All Breeds on Carcass Conformation
- Incredible 1.1% Calving Difficulty on Beef Cows



Eurostar Index ICBF Jan 2022				
Within Breed	Index	€uro Value	Reliability	Across Breeds
★★★★	Replacement	€67	47%	★★
★★★★	Terminal	€140	58%	★★★★★

Calving Difficulty		
When mated with:	Value	Reliability
Beef Heifers	5.3%	67%
Beef Cows	1.1%	72%

Expected Daughter Performance				
Within Breed	Key Profit Trait	Index Value	Reliability	Across Breeds
	Daughter CD	5.38%	52%	
★	Daughter Milk (Kg)	-7.20	43%	★
★★★★★	Daughter CI (Days)	-0.58	37%	★★★★

Expected Progeny Performance				
Within Breed	Key Profit Trait	Index Value	Reliability	Across Breeds
★★★★	Docility	-0.06	51%	★
★	Carcass Weight	16.8Kg	62%	★★★★
★★★★★	Carcass Conformation	2.54	55%	★★★★★

HAPPY

BAQFRAM006413382190

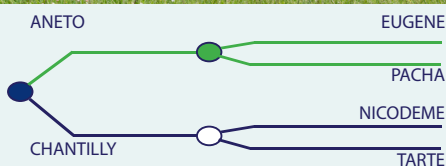
MYOSTATIN: AWAITING

BA6709

30-SEP-2012



- Extreme Muscled Blonde d'Aquitaine Sire
- Impressive Proven Terminal Figures in France
 - o 105 Calving
 - o 117 Muscle
 - o 130 Total Beef Merit
- Ideal Choice for Plainer Beef Cows



Eurostar Index ICBF Jan 2022				
Within Breed	Index	€uro Value	Reliability	Across Breeds
★★★	Replacement	€60	46%	★★
★★★	Terminal	€126	51%	★★★★

Calving Difficulty		
When mated with:	Value	Reliability
Beef Heifers	10.7%	41%
Beef Cows	3.0%	71%

Expected Daughter Performance				
Within Breed	Key Profit Trait	Index Value	Reliability	Across Breeds
	Daughter CD	5.25%	55%	
★	Daughter Milk (Kg)	-7.10	45%	★
★★★★★	Daughter CI (Days)	-1.37	38%	★★★★

Expected Progeny Performance				
Within Breed	Key Profit Trait	Index Value	Reliability	Across Breeds
★★★★	Docility	0.00	43%	★★★★
★	Carcass Weight	18.6Kg	53%	★★★★
★★★★★	Carcass Conformation	2.55	51%	★★★★★

BALTRA ICEMAN

BA4131

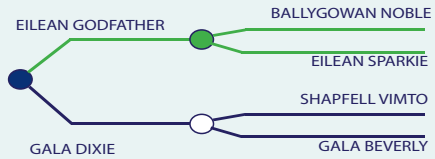
BAQIRLM281604240676

05-NOV-2014

MYOSTATIN: FREE



- Icedan Progeny Excel on Performance, Power & Weight for Age
- The Perfect Option to Produce Fast Growing High Value Cattle



Eurostar Index ICBF Jan 2022				
Within Breed	Index	€uro Value	Reliability	Across Breeds
★	Replacement	€23	55%	★
★	Terminal	€106	67%	★★★

Calving Difficulty		
When mated with:	Value	Reliability
Beef Heifers	17.2%	46%
Beef Cows	9.1%	79%

Expected Daughter Performance				
Within Breed	Key Profit Trait	Index Value	Reliability	Across Breeds
	Daughter CD	5.28%	54%	
★★★★	Daughter Milk (Kg)	-3.80	47%	★
★★	Daughter CI (Days)	3.01	40%	★

Expected Progeny Performance				
Within Breed	Key Profit Trait	Index Value	Reliability	Across Breeds
★★★	Docility	-0.10	71%	★
★★★★★	Carcass Weight	26.7Kg	75%	★★★★★
★★★	Carcass Conformation	2.07	69%	★★★★★

GAZOU

BA2300

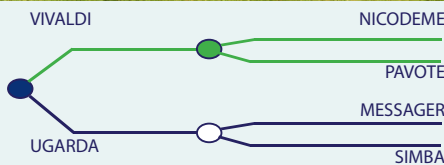
BAQFRAM001211079042

22-FEB-2011

MYOSTATIN: FREE



- Gazou is Transmitting Incredible Shape & Style to his Progeny
- One of the Highest Rated Bulls in France on Muscle at 134
- Mature Suckler Cows Only



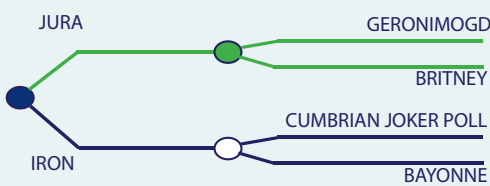
Eurostar Index ICBF Jan 2022				
Within Breed	Index	€uro Value	Reliability	Across Breeds
★	Replacement	€-20	64%	★
★★★	Terminal	€128	79%	★★★★★

Calving Difficulty		
When mated with:	Value	Reliability
Beef Heifers	18.6%	44%
Beef Cows	8.6%	87%

Expected Daughter Performance				
Within Breed	Key Profit Trait	Index Value	Reliability	Across Breeds
	Daughter CD	6.83%	57%	
★	Daughter Milk (Kg)	-7.90	61%	★
★	Daughter CI (Days)	3.74	43%	★

Expected Progeny Performance				
Within Breed	Key Profit Trait	Index Value	Reliability	Across Breeds
★★★★★	Docility	0.00	78%	★★★
★★★★★	Carcass Weight	30.9Kg	91%	★★★★★
★★★★★	Carcass Conformation	2.74	88%	★★★★★

Blonde d'Aquitane



- Heterozygous Polled Sailer Sire
- First Daughters Calved in France are Very Impressive
- Balanced Bull on Both Beef & Maternal Traits
 - o Growth 117
 - o Muscle 120
 - o IVMAT 114
- Sexed Female Semen Available

Eurostar Index ICBF Jan 2022				
Within Breed	Index	€uro Value	Reliability	Across Breeds
★★	Replacement	€151	41%	★★★★★
★★★★★	Terminal	€112	48%	★★★★★

Calving Difficulty		
When mated with:	Value	Reliability
Beef Heifers	5.0%	34%
Beef Cows	1.9%	76%

Expected Daughter Performance				
Within Breed	Key Profit Trait	Index Value	Reliability	Across Breeds
	Daughter CD	5.26%	58%	
★	Daughter Milk (Kg)	2.70	40%	★★★
★★	Daughter CI (Days)	-3.12	32%	★★★★★

Expected Progeny Performance				
Within Breed	Key Profit Trait	Index Value	Reliability	Across Breeds
★★	Docility	-0.12	33%	★
★★★★★	Carcass Weight	21.7Kg	45%	★★★★★
★★★★★	Carcass Conformation	1.19	45%	★★

Sailer



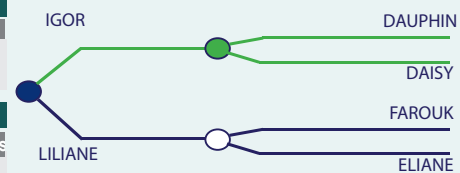
- Huge Replacement Index of €214 Combined with +7.7 Kgs Daughter Milk
- Incredibly Easy Calving on Muscular Maiden Heifers:
 - o 3.5% C.D On Beef Heifers at 98% Rel.

Eurostar Index ICBF Jan 2022				
Within Breed	Index	€uro Value	Reliability	Across Breeds
★★★★★	Replacement	€214	92%	★★★★★
★★★★★	Terminal	€110	90%	★★★★★

Calving Difficulty		
When mated with:	Value	Reliability
Beef Heifers	3.5%	98%
Beef Cows	1.0%	98%

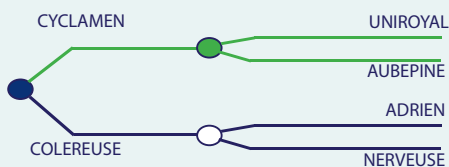
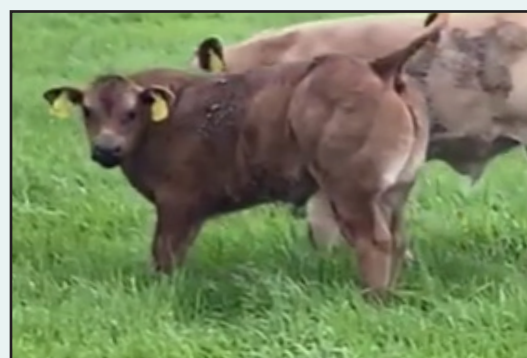
Expected Daughter Performance				
Within Breed	Key Profit Trait	Value	Reliability	Across Breeds
	Daughter CD	3.93%	93%	
★★★★★	Daughter Milk (Kg)	7.70	98%	★★★★★
★★★	Daughter CI (Days)	-3.46	82%	★★★★★

Expected Progeny Performance				
Within Breed	Key Profit Trait	Value	Reliability	Across Breeds
★	Docility	-0.17	99%	★
★★★★★	Carcass Weight	20.7Kg	99%	★★★★★
★★★★★	Carcass Conformation	1.09	99%	★★





- Superb Parthenaise Bull
- Calves are Medium Sized, Born Easily & Develop Muscle Quickly
- Incredible Figures, Boasting:
 - o €192 Terminal Index
 - o 2.7% C.D. on Beef Cows
 - o +43.2Kgs Carcass Weight
- Use Gainsbarre to Breed Exceptional Export Type Weanlings



Eurostar Index ICBF Jan 2022

Within Breed	Index	€uro Value	Reliability	Across Breeds
★★★★★	Replacement	€157	51%	★★★★★
★★★★★	Terminal	€192	62%	★★★★★

Calving Difficulty

When mated with:	Value	Reliability
Beef Heifers	8.8%	37%
Beef Cows	2.7%	82%

Expected Daughter Performance

Within Breed	Key Profit Trait	Index Value	Reliability	Across Breeds
	Daughter CD	4.72%	45%	
★★★★★	Daughter Milk (Kg)	1.90	60%	★★★★
★★★★★	Daughter CI (Days)	-0.43	33%	★★★★

Expected Progeny Performance

Within Breed	Key Profit Trait	Index Value	Reliability	Across Breeds
★	Docility	-0.11	71%	★
★★★★★	Carcass Weight	43.2Kg	67%	★★★★★
★★★★★	Carcass Conformation	2.29	63%	★★★★★

Parthenaise

CLONINA EXPLORER 300 (RO) (P) SH4609

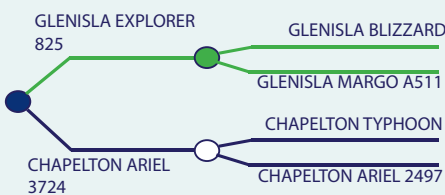
MSHIRLM224618060300

MYOSTATIN: 1 X E226X

25-FEB-2017



- Explorer is Transmitting Length, Beautiful Shape & Extreme Style
- Super Indices on Carcass Weight, Conformation & Daughter Milk
- Use Explorer on Plainer Type Cows to Breed Exceptional Shorthorn Progeny



Eurostar Index ICBF Jan 2022				
Within Breed	Index	Euro Value	Reliability	Across Breeds
★★★	Replacement	€116	56%	★★★★★
★★★★★	Terminal	€77	69%	★★★

Calving Difficulty		
When mated with:	Value	Reliability
Beef Heifers	15.2%	69%
Beef Cows	5.4%	89%

Expected Daughter Performance				
Within Breed	Key Profit Trait	Index Value	Reliability	Across Breeds
	Daughter CD	7.1%	60%	
★★★★★	Daughter Milk (Kg)	11.70	47%	★★★★★
★	Daughter CI (Days)	-0.86	40%	★★★

Expected Progeny Performance				
Within Breed	Key Profit Trait	Index Value	Reliability	Across Breeds
★★★★★	Docility	0.24	88%	★★★★★
★★★★★	Carcass Weight	26.4Kg	71%	★★★★★
★★★★★	Carcass Conformation	1.06	64%	★

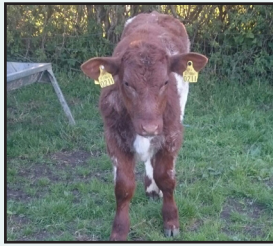
BELLANTRA BRESSIE (DRO)

JFZ

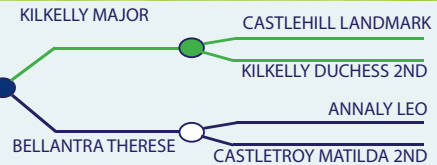
MSHIRLM231403720131

MYOSTATIN: FREE

28-MAR-2013



- Proven Easy Calving Traditional Shorthorn Sire
- High Replacement Index of €139 Combined With +8.0Kgs Daughter Milk
- Ideal Choice for Well Grown Maiden Heifers



Eurostar Index ICBF Jan 2022				
Within Breed	Index	€uro Value	Reliability	Across Breeds
★★★★★	Replacement	€139	87%	★★★★★
★	Terminal	-€5	90%	★

Calving Difficulty		
When mated with:	Value	Reliability
Beef Heifers	6.1%	90%
Beef Cows	2.6%	95%

Expected Daughter Performance				
Within Breed	Key Profit Trait	Index Value	Reliability	Across Breeds
	Daughter CD	8.96%	85%	
★★	Daughter Milk (Kg)	8.00	92%	★★★★★
★★★★★	Daughter CI (Days)	-6.48	71%	★★★★★

Expected Progeny Performance				
Within Breed	Key Profit Trait	Index Value	Reliability	Across Breeds
★★★	Docility	0.08	95%	★★★★★
★	Carcass Weight	-7.1Kg	98%	★★
★	Carcass Conformation	0.29	97%	★

CASTLEFIN HOTSHOT (P)(ET)

SH6424

MSHGBRM937352400214

MYOSTATIN: FREE

06-MAY-2018

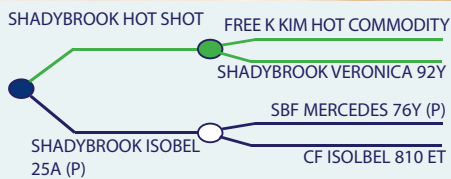


Sire: Shadybrook Hotshot



Dam: Shadybrook Isobel 25A (P)

- First Calves Are Easily Born & Very Impressive
- Hotshot P Has Developed into a Big Powerful, Easy Fleshing, Correct Bull with a Super Topline
- Myostatin Free



Eurostar Index ICBF Jan 2022				
Within Breed	Index	€uro Value	Reliability	Across Breeds
★★	Replacement	€103	33%	★★★★
★★★★	Terminal	€30	35%	★

Calving Difficulty		
When mated with:	Value	Reliability
Beef Heifers	8.2%	39%
Beef Cows	2.5%	59%

Expected Daughter Performance				
Within Breed	Key Profit Trait	Index Value	Reliability	Across Breeds
★★★★	Daughter CD	6.84%	50%	
★★★★	Daughter Milk (Kg)	10.30	30%	★★★★★
★	Daughter CI (Days)	-0.62	30%	★★★

Expected Progeny Performance				
Within Breed	Key Profit Trait	Index Value	Reliability	Across Breeds
★★★	Docility	0.07	30%	★★★★★
★★★	Carcass Weight	3.3Kg	30%	★
★★★	Carcass Conformation	0.53	30%	★

Shorthorn

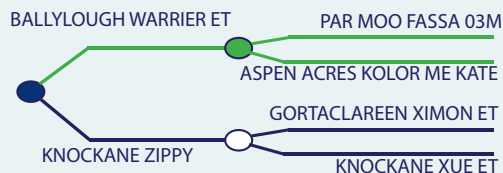
BALLYLOUGH EDWARD

SP4866

SPZGBRM915176930254

MYOSTATIN: 1 X NT821

23-MAR-2017



- Edward is Transmitting Serious Style & Colour to his Progeny
- Carries One Copy of NT821 Myostatin Variant
- Suckler Progeny are Highly Sought After

Eurostar Index ICBF Jan 2022				
Within Breed	Index	€uro Value	Reliability	Across Breeds
★★★★	Replacement	€85	57%	★★★★
★★★★	Terminal	€10	75%	★

Calving Difficulty		
When mated with:	Value	Reliability
Beef Heifers	4.4%	72%
Beef Cows	1.6%	83%

Expected Daughter Performance				
Within Breed	Key Profit Trait	Index Value	Reliability	Across Breeds
	Daughter CD	9.35%	59%	
★★★★	Daughter Milk (Kg)	3.20	43%	★★★★
★★★★★	Daughter CI (Days)	-5.92	45%	★★★★★

Expected Progeny Performance				
Within Breed	Key Profit Trait	Index Value	Reliability	Across Breeds
★	Docility	-0.08	81%	★
★★	Carcass Weight	-2.9Kg	81%	★
★★★★★	Carcass Conformation	0.73	75%	★

Speckle Park

KILBARRY HARPER

SP7347

SPZIRLM212169780491

MYOSTATIN: FREE

26-FEB-2020



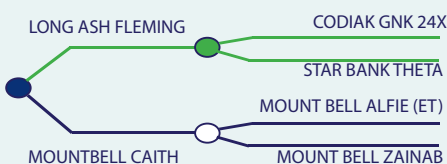
- Harper Is a Very Correct, Stylish, New Speckle Park Sire
- High Replacement Index €107 Combined With +7Kgs Daughter

Eurostar Index ICBF Jan 2022				
Within Breed	Index	€uro Value	Reliability	Across Breeds
★★★★★	Replacement	€107	38%	★★★★★
★★★★	Terminal	€18	41%	★

Calving Difficulty		
When mated with:	Value	Reliability
Beef Heifers	4.6%	35%
Beef Cows	1.9%	60%

Expected Daughter Performance				
Within Breed	Key Profit Trait	Value	Reliability	Across Breeds
	Daughter CD	8.58%	81%	
★★★★★	Daughter Milk (Kg)	7.00	35%	★★★★★
★★★★★	Daughter CI (Days)	-3.43	32%	★★★★★

Expected Progeny Performance				
Within Breed	Key Profit Trait	Value	Reliability	Across Breeds
★	Docility	-0.05	33%	★★
★★	Carcass Weight	-2.5Kg	42%	★
★★★★★	Carcass Conformation	0.85	34%	★



LISDUFF RED PEPPER R368

AA4303

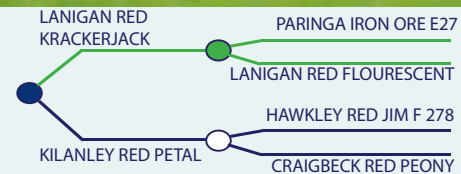
AA N I R L M 1 2 1 6 5 7 6 5 1 3 6 8

04-OCT-2015

MYOSTATIN: FREE



- Elite Red Angus Sire with Excellent Calving Ease
- Very Well-Balanced Sire Across Replacement & Terminal Traits
- Ideal Choice to Breed Top Class Suckler Replacements



Eurostar Index ICBF Jan 2022				
Within Breed	Index	€uro Value	Reliability	Across Breeds
★★★★★	Replacement	€126	69%	★★★★★
★★★★★	Terminal	€97	88%	★★★

Calving Difficulty		
When mated with:	Value	Reliability
Beef Heifers	5.0%	94%
Beef Cows	1.3%	93%

Expected Daughter Performance				
Within Breed	Key Profit Trait	Index Value	Reliability	Across Breeds
	Daughter CD	6.91%	59%	
★★★★★	Daughter Milk (Kg)	7.00	62%	★★★★★
★★	Daughter CI (Days)	-3.80	45%	★★★★★

Expected Progeny Performance				
Within Breed	Key Profit Trait	Index Value	Reliability	Across Breeds
★★★★★	Docility	0.06	96%	★★★★★
★★★★★	Carcass Weight	14Kg	97%	★★
★★★★★	Carcass Conformation	0.88	96%	★

KEALKIL PRIME LAD

AA4743

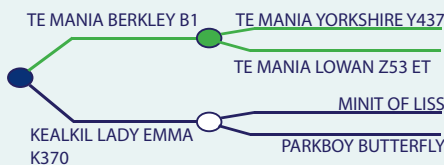
AA N I R L M 1 4 1 0 8 9 6 4 0 4 9 3

07-SEP-2017

MYOSTATIN: FREE



- Prime Lad Has a Phenomenal Replacement Index of €178
- He is One of Ireland's Leading Angus Sires in The Dairy X Beef World
- Trait Leader on Gestation Length, Calving Ease & Performance
- Sexed Semen Available Both Male & Female



Eurostar Index ICBF Jan 2022				
Within Breed	Index	€uro Value	Reliability	Across Breeds
★★★★★	Replacement	€178	61%	★★★★★
★★★★★	Terminal	€87	78%	★★★

Calving Difficulty		
When mated with:	Value	Reliability
Beef Heifers	2.1%	85%
Beef Cows	0.6%	90%

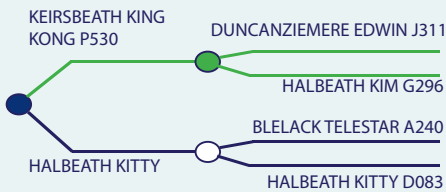
Expected Daughter Performance				
Within Breed	Key Profit Trait	Index Value	Reliability	Across Breeds
	Daughter CD	8.57%	62%	
★★★★★	Daughter Milk (Kg)	11.70	49%	★★★★★
★★★★★	Daughter CI (Days)	-8.70	46%	★★★★★

Expected Progeny Performance				
Within Breed	Key Profit Trait	Index Value	Reliability	Across Breeds
★★★★★	Docility	0.07	90%	★★★★★
★★	Carcass Weight	3.4Kg	82%	★
★★★★★	Carcass Conformation	0.94	77%	★





- Pedigree Progeny are Truly Exceptional Displaying Power, Structure & Excellent Angus Characteristics
- Karma Sired Both the Reserve Senior & Reserve Junior Champion Female at The Irish Angus Elite Sale Dec 21 & Top Priced Angus at Clonagh Festive Female Sale Dec 21
- Serious Bull to Use on Medium Sized Suckler or Pedigree Cows to Improve Your Females
- **Sexed Female Semen Available**



Eurostar Index ICBF Jan 2022				
Within Breed	Index	€uro Value	Reliability	Across Breeds
★★	Replacement	€85	52%	★★★
★★★★★	Terminal	€87	75%	★★★

Calving Difficulty		
When mated with:	Value	Reliability
Beef Heifers	7.6%	73%
Beef Cows	3.2%	86%

Expected Daughter Performance				
Within Breed	Key Profit Trait	Index Value	Reliability	Across Breeds
	Daughter CD	6.02%	52%	
★★★	Daughter Milk (Kg)	5.70	37%	★★★★★
★	Daughter CI (Days)	-2.01	38%	★★★★★

Expected Progeny Performance				
Within Breed	Key Profit Trait	Index Value	Reliability	Across Breeds
★★★★★	Docility	0.07	72%	★★★★★
★★★★★	Carcass Weight	15.6Kg	81%	★★★
★★★★★	Carcass Conformation	0.75	76%	★



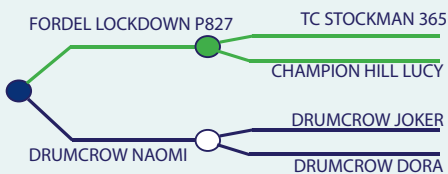
- Tribesman is a New Superstar Angus Sire for Dovea
- Pedigree Includes Fordel Lockdown and The Famous 'Drumcrow Joker' from the Most Consistent Cow Family in Drumcrow
- Tribesman Displays Length, Width & Breed Character with a Proper Angus Head
- Purchased In Association with The Irish Angus Producer Group
- Semen Available April 2022



MGS: Drumcow Joker



Sire: Fordel Lockdown P827



Eurostar Index ICBF Jan 2022

Within Breed	Index	€uro Value	Reliability	Across Breeds
★★★★★	Replacement	€148	43%	★★★★★
★★★★★	Terminal	€70	45%	★★

Calving Difficulty

When mated with:	Value	Reliability
Beef Heifers	4.8%	42%
Beef Cows	2.2%	65%

Expected Daughter Performance

Within Breed	Key Profit Trait	Index Value	Reliability	Across Breeds
	Daughter CD	6.96%	55%	
★★★★★	Daughter Milk (Kg)	12.60	42%	★★★★★
★	Daughter CI (Days)	-2.35	35%	★★★★★

Expected Progeny Performance

Within Breed	Key Profit Trait	Index Value	Reliability	Across Breeds
★★★★★	Docility	0.10	41%	★★★★★
★★★★★	Carcass Weight	10.7Kg	45%	★★
★★	Carcass Conformation	0.61	38%	★

Angus

STOUPHILL BOMBER T182

AA5373

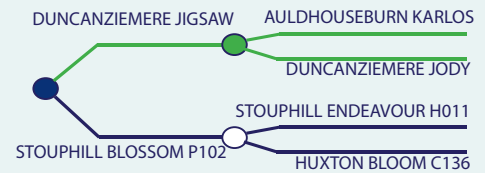
AANGBRM106395400182

MYOSTATIN: FREE

08-APR-2017



- Sire of 'Laheens Triumph' Top Priced Male at €7100 at The Irish Angus Elite Sale 2021
- Breeding Superb, Well-Made Cattle with Excellent Breed Character & Style
- Use Bomber to Be a Step Ahead



Eurostar Index ICBF Jan 2022				
Within Breed	Index	€uro Value	Reliability	Across Breeds
★	Replacement	€80	45%	★★★
★★★★★	Terminal	€79	55%	★★★★

Expected Daughter Performance				
Within Breed	Key Profit Trait	Index Value	Reliability	Across Breeds
	Daughter CD	7.21%	54%	
★★	Daughter Milk (Kg)	4.70	38%	★★★★★
★★	Daughter CI (Days)	-3.94	34%	★★★★★

Calving Difficulty		
When mated with:	Value	Reliability
Beef Heifers	6.0%	63%
Beef Cows	2.1%	85%

Expected Progeny Performance				
Within Breed	Key Profit Trait	Index Value	Reliability	Across Breeds
★★	Docility	0.01	72%	★★
★★★★★	Carcass Weight	11Kg	53%	★★
★★★★★	Carcass Conformation	0.79	39%	★

DUNARD NAVIGATOR

AA4603

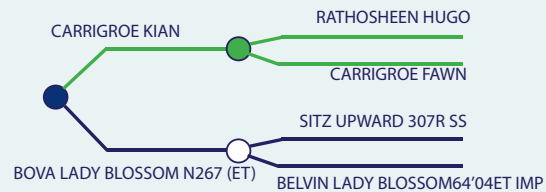
AANIRLM341595150024

MYOSTATIN: FREE

17-OCT-2016



- New High Index Angus Sire for Dovea's Beef Stud
- Navigator is Breeding Small Calves at Birth that Develop Rapidly
- Best Used on Traditional Type Cows



Eurostar Index ICBF Jan 2022				
Within Breed	Index	€uro Value	Reliability	Across Breeds
★★★★★	Replacement	€134	61%	★★★★★
★★★★★	Terminal	€76	83%	★★★★

Calving Difficulty		
When mated with:	Value	Reliability
Beef Heifers	4.0%	72%
Beef Cows	1.6%	90%



Expected Daughter Performance				
Within Breed	Key Profit Trait	Index Value	Reliability	Across Breeds
	Daughter CD	5.76%	60%	
★★★★★	Daughter Milk (Kg)	8.00	46%	★★★★★
★★	Daughter CI (Days)	-3.63	43%	★★★★★

Expected Progeny Performance				
Within Breed	Key Profit Trait	Index Value	Reliability	Across Breeds
★★★★★	Docility	0.06	91%	★★★★★
★★★★★	Carcass Weight	14.2Kg	86%	★★
★★★	Carcass Conformation	0.65	83%	★

KILTEEVAN NICKY

AA4395
 ANIRLM311229170300

MYOSTATIN: FREE

03-MAY-2016



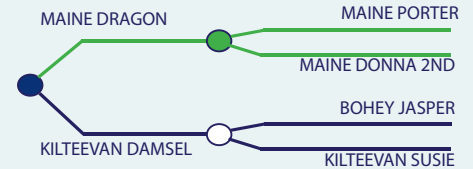
L: Carrowboy Untouchable



- Super Traditional Pedigree Including Maine Dragon, Bohey Jasper and Drumdeevin Dancer
- Nicky's Dam 'Damsel' is an Exceptional Breeding Cow Still Breeding at 16 Years
- Maternal Sister Carrowboy Untouchable was Female Champion at The National Calf Show 2021

Eurostar Index ICBF Jan 2022					Calving Difficulty		
Within Breed	Index	Euro Value	Reliability	Across Breeds	When mated with:	Value	Reliability
★★	Replacement	€83	54%	★★★	Beef Heifers	7.2%	57%
★★★★★	Terminal	€91	63%	★★★★★	Beef Cows	2.9%	76%

Expected Daughter Performance					Expected Progeny Performance				
Within Breed	Key Profit Trait	Value	Reliability	Across Breeds	Within Breed	Key Profit Trait	Value	Reliability	Across Breeds
	Daughter CD	6.76%	63%		★★★★★	Docility	0.04	51%	★★★★★
★	Daughter Milk (Kg)	3.60	47%	★★★★★	★★★★★	Carcass Weight	9.6Kg	68%	★★
★★	Daughter CI (Days)	-3.15	44%	★★★★★	★★★★★	Carcass Conformation	1.36	60%	★★★



BUNLAHY JOHN G ET

ANIRLM251261710285

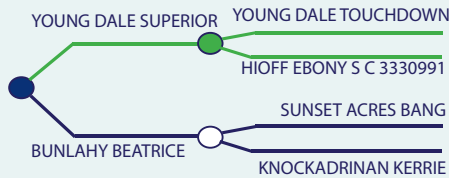
MYOSTATIN: FREE

BJG

06-OCT-2012



- Ireland's Leading Terminal Angus Sire
- Transmitting Weight for Age, Conformation, Power & Correctness
- Proven +19.3Kgs Of Carcass Weight
- Sexed Semen Available



Eurostar Index ICBF Jan 2022					Calving Difficulty		
Within Breed	Index	Euro Value	Reliability	Across Breeds	When mated with:	Value	Reliability
★	Replacement	€74	92%	★★	Beef Heifers	9.8%	94%
★★★★★	Terminal	€86	92%	★★★★★	Beef Cows	4.0%	98%

Expected Daughter Performance					Expected Progeny Performance				
Within Breed	Key Profit Trait	Value	Reliability	Across Breeds	Within Breed	Key Profit Trait	Value	Reliability	Across Breeds
	Daughter CD	7.08%	89%		★★★★	Docility	0.02	98%	★★★★
★★	Daughter Milk (Kg)	5.30	95%	★★★★★	★★★★★	Carcass Weight	19.3	99%	★★★★★
★	Daughter CI (Days)	-0.45	80%	★★★	★★★★★	Carcass Conformation	0.97	99%	★★

LISDUFF LEONARDO S387

ANIRLM121657681387

MYOSTATIN: 1 X NT821

AA4305

07-FEB-2016

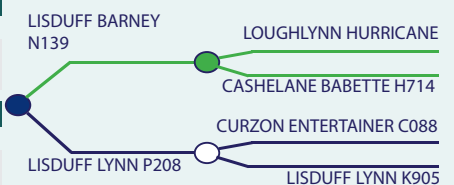


- Shapely, Stylish Angus Bull, Perfectly Suited to Suckler Cows
- Top 5% of the Breed for Carcass Conformation
- Will Breed U Grade Progeny from Suckler Dams



Eurostar Index ICBF Jan 2022					Calving Difficulty		
Within Breed	Index	Euro Value	Reliability	Across Breeds	When mated with:	Value	Reliability
★	Replacement	€74	61%	★★	Beef Heifers	7.5%	66%
★★★	Terminal	€66	82%	★★	Beef Cows	3.1%	87%

Expected Daughter Performance					Expected Progeny Performance				
Within Breed	Key Profit Trait	Value	Reliability	Across Breeds	Within Breed	Key Profit Trait	Value	Reliability	Across Breeds
	Daughter CD	5.96%	58%		★★	Docility	-0.03	84%	★★
★	Daughter Milk (Kg)	3.70	49%	★★★★★	★★★★	Carcass Weight	5.3Kg	92%	★
★	Daughter CI (Days)	-0.95	43%	★★★	★★★★★	Carcass Conformation	0.92	90%	★



BALLYLOUGH RANGER

BY4875

BGZGBRM915176930217

MYOSTATIN: FREE

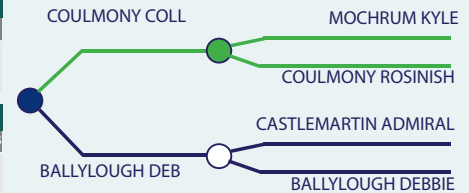
18-MAR-2017

- Beautiful Belted Galloway Calves Born from Ranger
- Hugely Popular Choice with International Belted Galloway Breeders



Eurostar Index ICBF Jan 2022					Calving Difficulty		
Within Breed	Index	Euro Value	Reliability	Across Breeds	When mated with:	Value	Reliability
★★★★	Replacement	€89	42%	★★★★	Beef Heifers	2.5%	33%
★	Terminal	-€24	58%	★	Beef Cows	0.5%	63%

Expected Daughter Performance					Expected Progeny Performance				
Within Breed	Key Profit Trait	Value	Reliability	Across Breeds	Within Breed	Key Profit Trait	Value	Reliability	Across Breeds
	Daughter CD	7.06%	46%		★	Docility	-0.04	45%	★★
★★	Daughter Milk (Kg)	2.90	31%	★★★★	★	Carcass Weight	-20.4Kg	64%	★
★★★★	Daughter CI (Days)	-2.68	32%	★★★★★	★	Carcass Conformation	0.16	57%	★



ONAIL

HI7583

HLADEUM001503654169

MYOSTATIN: FREE

25-JUN-2007

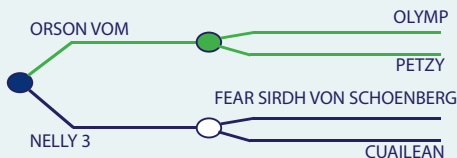


NEW

- Onail Is a Very Classy Red Highland Bull
- His Sire Orson is Medium Sized, Very Long with a Wide Chest and Rump Width
- Orson Was a Show Bull (National Champion in Germany)

Eurostar Index ICBF Jan 2022					Calving Difficulty		
Within Breed	Index	Euro Value	Reliability	Across Breeds	When mated with:	Value	Reliability
★★	Replacement	€45	32%	★	Beef Heifers	4.9%	22%
★★	Terminal	€0	33%	★	Beef Cows	2.8%	53%

Expected Daughter Performance					Expected Progeny Performance				
Within Breed	Key Profit Trait	Value	Reliability	Across Breeds	Within Breed	Key Profit Trait	Value	Reliability	Across Breeds
	Daughter CD	6.78%	43%		★	Docility	-0.02	30%	★★
★	Daughter Milk (Kg)	-0.10	30%	★★	★★	Carcass Weight	-4.9Kg	30%	★
★★	Daughter CI (Days)	-1.49	30%	★★★★★	★★	Carcass Conformation	0.34	30%	★



NOTES



Dovea GENETICS

Maximizing Your Herd's Genetic Potential

AREA REPRESENTATIVES



COLM CHAMBERS
CAVAN & MONAGHAN
087 6703093



JOHN O'REILLY
CLARE
087 7975471



PAT O'CONNOR
CORK
087 9209632



COLIN O'LEARY
MID & WEST CORK
087 6265990



PEARSE McNAMEE
DONEGAL
086 8106474



NICHOLAS BERGIN
GALWAY & OFFALY
086 2515869



TIM FITZMAURICE
KERRY
087 2359709



DENIS GALVIN
WEST KERRY
086 6095081



NEIL LAHART
KILKENNY, WATERFORD,
CARLOW & DUBLIN
086 2537087



TONY FLANNERY
LAOIS, KILDARE & TIPPERARY
086 8068006



MARTIN FLANAGAN
LEITRIM, MAYO & SLIGO
087 1226636



MICHAEL KINANE
LIMERICK
087 6252873



RONAN BEIRNE
LONGFORD & ROSCOMMON
083 4119955



KIERAN SHIELDS
LOUTH
086 8283315



PAT McCULLEN
MEATH & WESTMEATH
087 9062041



DAVID GOULDING
NORTH TIPPERARY
087 9380367



PATRICK GLEESON
WEXFORD & WICKLOW
086 3080595



PAT HACKETT
NORTHERN IRELAND
07946 094744



Thurles, Co Tipperary, Ireland, E41 FH28

Tel: +353 (0) 504 21755

E: info@doveagenetics.ie

www.doveagenetics.ie

